

Datasheet for ABIN1724797
anti-RPL18A antibody (AA 50-176)

6 Images

2 Publications

[Go to Product page](#)

Overview

Quantity:	100 µL
Target:	RPL18A
Binding Specificity:	AA 50-176
Reactivity:	Human, Mouse
Host:	Mouse
Clonality:	Monoclonal
Conjugate:	This RPL18A antibody is un-conjugated
Application:	Western Blotting (WB), ELISA, Immunohistochemistry (IHC), Flow Cytometry (FACS), Immunocytochemistry (ICC)

Product Details

Immunogen:	Purified recombinant fragment of human RPL18A (AA: 50-176) expressed in E. coli.
Clone:	6G6G10
Isotype:	IgG1
Purification:	purified

Target Details

Target:	RPL18A
Alternative Name:	RPL18A (RPL18A Products)
Background:	Description: Ribosomes, the organelles that catalyze protein synthesis, consist of a small 40S

Target Details

subunit and a large 60S subunit. Together these subunits are composed of 4 RNA species and approximately 80 structurally distinct proteins. This gene encodes a member of the L18AE family of ribosomal proteins that is a component of the 60S subunit. The encoded protein may play a role in viral replication by interacting with the hepatitis C virus internal ribosome entry site (IRES). This gene is co-transcribed with the U68 snoRNA, located within the third intron. As is typical for genes encoding ribosomal proteins, there are multiple processed pseudogenes of this gene dispersed throughout the genome. , ,

Aliases: L18A

Molecular Weight:	20.8 kDa
-------------------	----------

Gene ID:	6142
----------	------

HGNC:	6142
-------	------

Application Details

Application Notes:	ELISA: 1:10000, WB: 1:500 - 1:2000, IHC: 1:200 - 1:1000, ICC: 1:200 - 1:1000, FCM: 1:200 - 1:400
--------------------	--

Restrictions:	For Research Use only
---------------	-----------------------

Handling

Format:	Liquid
---------	--------

Buffer:	Ascitic fluid containing 0.03 % sodium azide.
---------	---

Preservative:	Sodium azide
---------------	--------------

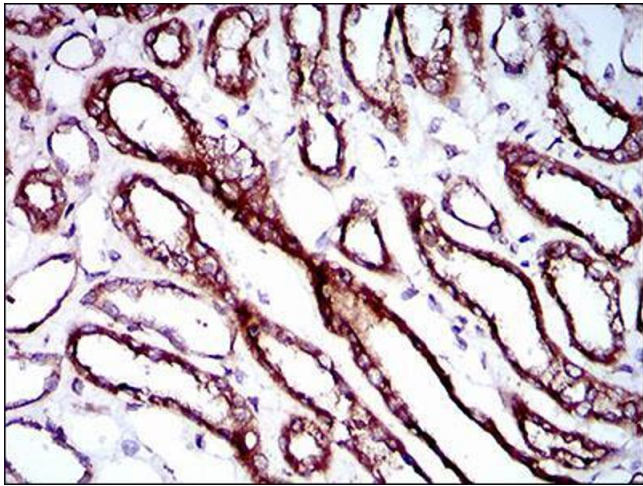
Precaution of Use:	This product contains Sodium azide: a POISONOUS AND HAZARDOUS SUBSTANCE which should be handled by trained staff only.
--------------------	--

Storage:	4 °C/-20 °C
----------	-------------

Storage Comment:	4°C, -20°C for long term storage
------------------	----------------------------------

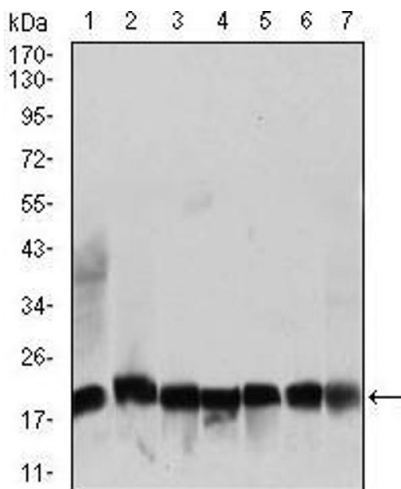
Publications

Product cited in:	Yoshida, Ishikawa, Niitsu, Nakazato, Watanabe, Shiraishi, Shiina, Hashimoto, Kanahara, Hasegawa, Enohara, Kimura, Iyo, Hashimoto: "Decreased serum levels of mature brain-derived neurotrophic factor (BDNF), but not its precursor proBDNF, in patients with major depressive disorder." in: PLoS ONE , Vol. 7, Issue 8, pp. e42676, (2012) (PubMed).
-------------------	---



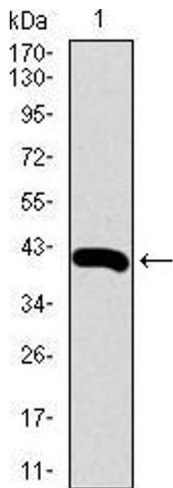
Immunohistochemistry

Image 1. Immunohistochemical analysis of paraffin-embedded kidney tissues using RPL18A mouse mAb with DAB staining.



Western Blotting

Image 2. Western blot analysis using RPL18A mouse mAb against NIH3T3 (1), HEK293 (2), HL60 (3), Jurka (4), Raji (5), MOLT4 (6), and HeLa (7) cell lysate.



Western Blotting

Image 3. Western blot analysis using RPL18A mAb against human RPL18A recombinant protein. (Expected MW is 40.5 kDa)

Please check the [product details page](#) for more images. Overall 6 images are available for ABIN1724797.