

Datasheet for ABIN1724803

**anti-MRPL42 antibody (AA 142-203)**

8 Images

2 Publications

[Go to Product page](#)

## Overview

Quantity:	100 µL
Target:	MRPL42
Binding Specificity:	AA 142-203
Reactivity:	Human
Host:	Mouse
Clonality:	Monoclonal
Conjugate:	This MRPL42 antibody is un-conjugated
Application:	ELISA, Immunohistochemistry (IHC), Western Blotting (WB), Flow Cytometry (FACS), Immunocytochemistry (ICC)

## Product Details

Immunogen:	Purified recombinant fragment of human MRPL42 (AA: 142-203) expressed in E. coli.
Clone:	3H6G11
Isotype:	IgG1
Purification:	purified

## Target Details

Target:	MRPL42
Alternative Name:	MRPL42 ( <a href="#">MRPL42 Products</a> )
Background:	Description: Mammalian mitochondrial ribosomal proteins are encoded by nuclear genes and

## Target Details

help in protein synthesis within the mitochondrion. Mitochondrial ribosomes (mitoribosomes) consist of a small 28S subunit and a large 39S subunit. They have an estimated 75 % protein to rRNA composition compared to prokaryotic ribosomes, where this ratio is reversed. Another difference between mammalian mitoribosomes and prokaryotic ribosomes is that the latter contain a 5S rRNA. Among different species, the proteins comprising the mitoribosome differ greatly in sequence, and sometimes in biochemical properties, which prevents easy recognition by sequence homology. This gene encodes a protein identified as belonging to both the 28S and the 39S subunits. Alternative splicing results in multiple transcript variants. Pseudogenes corresponding to this gene are found on chromosomes 4q, 6p, 6q, 7p, and 15q. , ,

Aliases: L31MT, L42MT, S32MT, MRPL31, MRPS32, PTD007, RPML31, HSPC204, MRP-L31, MRP-L42, MRP-S32

Molecular Weight:	16.7 kDa
-------------------	----------

Gene ID:	28977
----------	-------

HGNC:	28977
-------	-------

## Application Details

Application Notes:	ELISA: 1:10000, WB: 1:500 - 1:2000, IHC: 1:200 - 1:1000, ICC: 1:300, FCM: 1:200 - 1:400
--------------------	---

Restrictions:	For Research Use only
---------------	-----------------------

## Handling

Format:	Liquid
---------	--------

Buffer:	Ascitic fluid containing 0.03 % sodium azide.
---------	---

Preservative:	Sodium azide
---------------	--------------

Precaution of Use:	This product contains Sodium azide: a POISONOUS AND HAZARDOUS SUBSTANCE which should be handled by trained staff only.
--------------------	--

Storage:	4 °C/-20 °C
----------	-------------

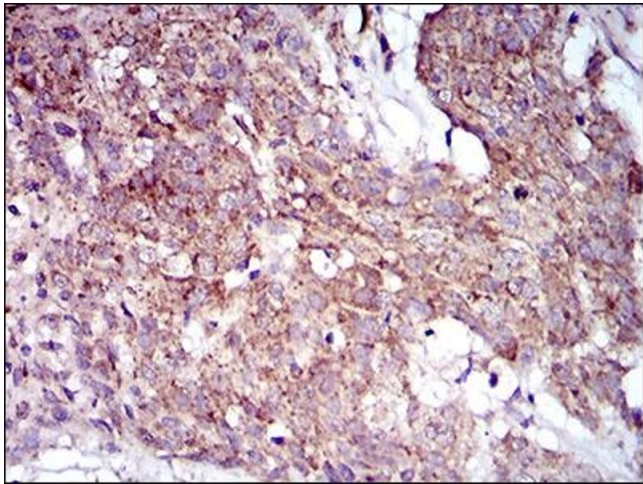
Storage Comment:	4°C, -20°C for long term storage
------------------	----------------------------------

## Publications

Product cited in:	Nayernia, Adham, Burkhardt-Göttges, Neesen, Rieche, Wolf, Sancken, Kleene, Engel: " Asthenozoospermia in mice with targeted deletion of the sperm mitochondrion-associated
-------------------	---

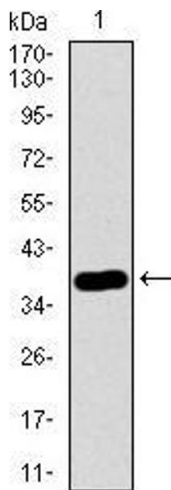
cysteine-rich protein (Smcp) gene." in: **Molecular and cellular biology**, Vol. 22, Issue 9, pp. 3046-52, (2002) ([PubMed](#)).

Images



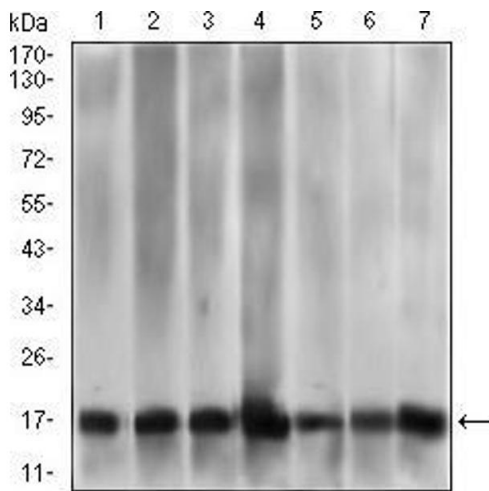
Immunohistochemistry

**Image 1.** Immunohistochemical analysis of paraffin-embedded esophageal cancer tissues using MRPL42 mouse mAb with DAB staining.



Western Blotting

**Image 2.** Western blot analysis using MRPL42 mAb against human MRPL42 recombinant protein. (Expected MW is 37.9 kDa)



Western Blotting

**Image 3.** Western blot analysis using MRPL42 mouse mAb against HL7702 (1), HepG2 (2), SMMC-7721 (3), HEK293 (4), HL60 (5), HeLa (6), and Raji (7) cell lysate.

Please check the [product details page](#) for more images. Overall 8 images are available for ABIN1724803.