

Datasheet for ABIN1724831  
**anti-GATA6 antibody (AA 491-557)**[Go to Product page](#)

## 4 Images

## Overview

Quantity:	0.1 mg
Target:	GATA6
Binding Specificity:	AA 491-557
Reactivity:	Human
Host:	Mouse
Clonality:	Monoclonal
Conjugate:	This GATA6 antibody is un-conjugated
Application:	ELISA, Western Blotting (WB), Immunocytochemistry (ICC), Flow Cytometry (FACS)

## Product Details

Immunogen:	Purified recombinant fragment of human GATA6 (AA: 491-557) expressed in E. coli.
Clone:	2F10G3
Isotype:	IgG1
Purification:	purified

## Target Details

Target:	GATA6
Alternative Name:	GATA6 ( <a href="#">GATA6 Products</a> )
Background:	Description: This gene is a member of a small family of zinc finger transcription factors that play an important role in the regulation of cellular differentiation and organogenesis during

## Target Details

vertebrate development. This gene is expressed during early embryogenesis and localizes to endo- and mesodermally derived cells during later embryogenesis and thereby plays an important role in gut, lung, and heart development. Mutations in this gene are associated with several congenital defects.

Aliases: GATA6

Molecular Weight:	60 kDa
-------------------	--------

Gene ID:	2627
----------	------

HGNC:	2627
-------	------

## Application Details

Application Notes:	ELISA: 1:10000, WB: 1:500 - 1:2000, ICC: 1:50 - 1:100, FCM: 1:200 - 1:400
--------------------	---

Restrictions:	For Research Use only
---------------	-----------------------

## Handling

Format:	Liquid
---------	--------

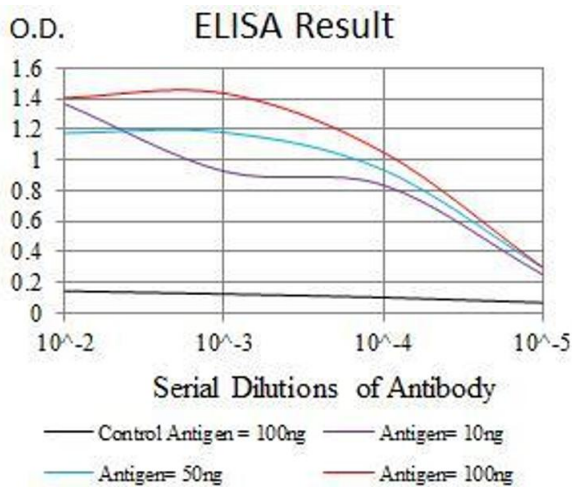
Buffer:	Purified antibody in PBS with 0.05 % sodium azide
---------	---

Preservative:	Sodium azide
---------------	--------------

Precaution of Use:	This product contains Sodium azide: a POISONOUS AND HAZARDOUS SUBSTANCE which should be handled by trained staff only.
--------------------	--

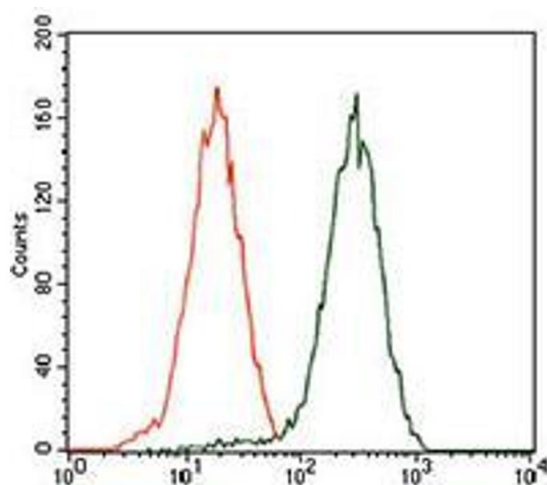
Storage:	4 °C/-20 °C
----------	-------------

Storage Comment:	4°C, -20°C for long term storage
------------------	----------------------------------



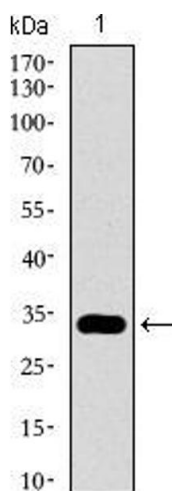
#### ELISA

**Image 1.** Black line: Control Antigen (100 ng), Purple line: Antigen(10 ng), Blue line: Antigen (50 ng), Red line: Antigen (100 ng),



#### Flow Cytometry

**Image 2.** Flow cytometric analysis of HEK293 cells using GATA6 mouse mAb (green) and negative control (red).



#### Western Blotting

**Image 3.** Western blot analysis using GATA6 mAb against human GATA6 recombinant protein. (Expected MW is 32.3 kDa)

Please check the [product details page](#) for more images. Overall 4 images are available for ABIN1724831.