



[Go to Product page](#)

Datasheet for ABIN1724832

anti-TUBB2A antibody (AA 25-187)

5 Images

2 Publications

Overview

Quantity:	0.1 mg
Target:	TUBB2A
Binding Specificity:	AA 25-187
Reactivity:	Human
Host:	Mouse
Clonality:	Monoclonal
Conjugate:	This TUBB2A antibody is un-conjugated
Application:	Western Blotting (WB), ELISA, Flow Cytometry (FACS)

Product Details

Immunogen:	Purified recombinant fragment of human TUBB2A (AA: 25-187) expressed in E. coli.
Clone:	6A10B2
Isotype:	IgG1
Purification:	purified

Target Details

Target:	TUBB2A
Alternative Name:	TUBB2A (TUBB2A Products)
Background:	Description: Tubulin is the major constituent of microtubules. It binds two moles of GTP, one at an exchangeable site on the beta chain and one at a non-exchangeable site on the alpha-chain. ,

Target Details

Aliases: TUBB, TUBB2, dJ40E16.7

Molecular Weight: 50 kDa

Gene ID: 7280

HGNC: 7280

Pathways: [Microtubule Dynamics, M Phase](#)

Application Details

Application Notes: ELISA: 1:10000, WB: 1:500 - 1:2000, FCM: 1:200 - 1:400

Restrictions: For Research Use only

Handling

Format: Liquid

Buffer: Purified antibody in PBS with 0.05 % sodium azide

Preservative: Sodium azide

Precaution of Use: This product contains Sodium azide: a POISONOUS AND HAZARDOUS SUBSTANCE which should be handled by trained staff only.

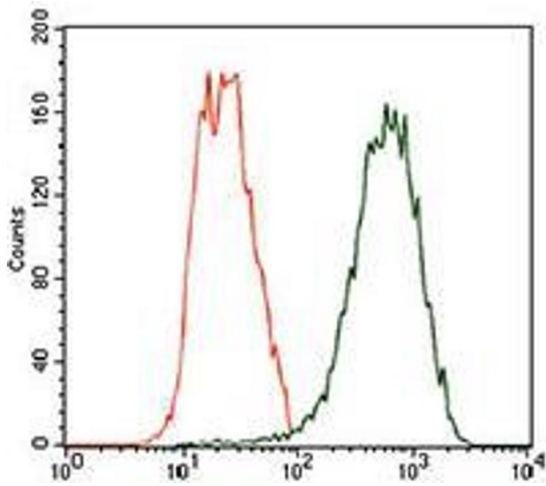
Storage: 4 °C/-20 °C

Storage Comment: 4°C, -20°C for long term storage

Publications

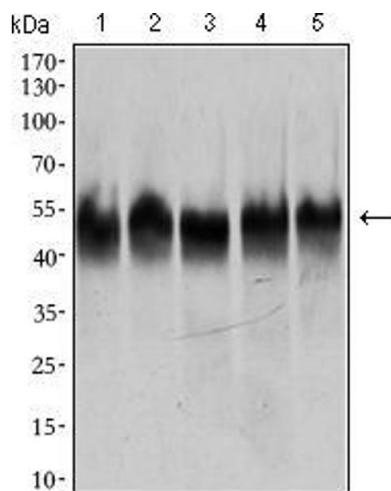
Product cited in: Zaha, Young: "AMP-activated protein kinase regulation and biological actions in the heart." in: **Circulation research**, Vol. 111, Issue 6, pp. 800-14, (2012) ([PubMed](#)).

Oliveira, Zhang, Solis, Isackson, Bellahcene, Yavari, Pinter, Davies, Ge, Ashrafian, Walker, Carling, Watkins, Casadei, Redwood: "AMP-activated protein kinase phosphorylates cardiac troponin I and alters contractility of murine ventricular myocytes." in: **Circulation research**, Vol. 110, Issue 9, pp. 1192-201, (2012) ([PubMed](#)).



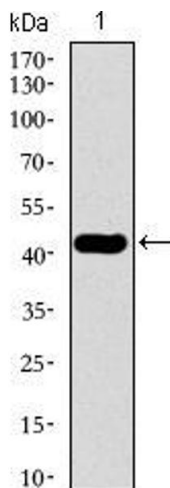
Flow Cytometry

Image 1. Flow cytometric analysis of HeLa cells using TUBB2A mouse mAb (green) and negative control (red).



Western Blotting

Image 2. Western blot analysis using TUBB2A mouse mAb against HeLa (1), A549 (2), HEK293 (3), Jurkat (4) and PC-12 (5) cell lysate.



Western Blotting

Image 3. Western blot analysis using TUBB2A mAb against human TUBB2A recombinant protein. (Expected MW is 43.2 kDa)

Please check the [product details page](#) for more images. Overall 5 images are available for ABIN1724832.