

Datasheet for ABIN1724838
anti-PHC1 antibody (AA 758-1004)[Go to Product page](#)

4 Images

1 Publication

Overview

| | |
|----------------------|---|
| Quantity: | 0.1 mg |
| Target: | PHC1 |
| Binding Specificity: | AA 758-1004 |
| Reactivity: | Human |
| Host: | Mouse |
| Clonality: | Monoclonal |
| Conjugate: | This PHC1 antibody is un-conjugated |
| Application: | Western Blotting (WB), ELISA, Flow Cytometry (FACS) |

Product Details

| | |
|---------------|--|
| Immunogen: | Purified recombinant fragment of human PHC1 (AA: 758-1004) expressed in E. coli. |
| Clone: | 1F3F3 |
| Isotype: | IgG1 |
| Purification: | purified |

Target Details

| | |
|-------------------|--|
| Target: | PHC1 |
| Alternative Name: | PHC1 (PHC1 Products) |
| Background: | Description: This gene is a homolog of the Drosophila polyhomeotic gene, which is a member of the Polycomb group of genes. The gene product is a component of a multimeric protein |

Target Details

complex that contains EDR2 and the vertebrate Polycomb protein BMH1. The gene product, the EDR2 protein, and the Drosophila polyhomeotic protein share 2 highly conserved domains, named homology domains I and II. These domains are involved in protein-protein interactions and may mediate heterodimerization of the protein encoded by this gene and the EDR2 protein.
Aliases: EDR1, HPH1, RAE28

Molecular Weight: 105.5 kDa

Gene ID: 1911

HGNC: 1911

Application Details

Application Notes: ELISA: 1:10000, WB: 1:500 - 1:2000, FCM: 1:200 - 1:400

Restrictions: For Research Use only

Handling

Format: Liquid

Buffer: Purified antibody in PBS with 0.05 % sodium azide

Preservative: Sodium azide

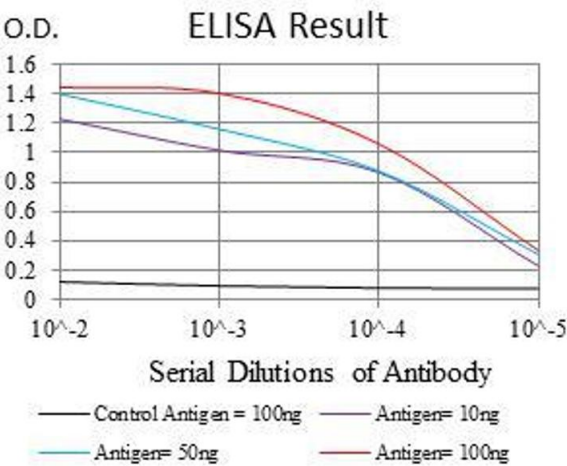
Precaution of Use: This product contains Sodium azide: a POISONOUS AND HAZARDOUS SUBSTANCE which should be handled by trained staff only.

Storage: 4 °C/-20 °C

Storage Comment: 4°C, -20°C for long term storage

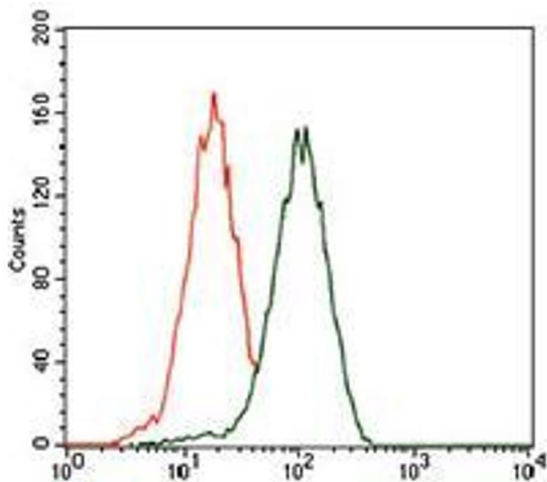
Publications

Product cited in: Yoshida, Ishikawa, Niitsu, Nakazato, Watanabe, Shiraishi, Shiina, Hashimoto, Kanahara, Hasegawa, Enohara, Kimura, Iyo, Hashimoto: "Decreased serum levels of mature brain-derived neurotrophic factor (BDNF), but not its precursor proBDNF, in patients with major depressive disorder." in: **PLoS ONE**, Vol. 7, Issue 8, pp. e42676, (2012) ([PubMed](#)).



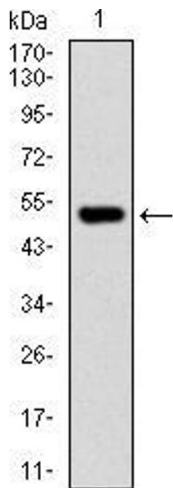
ELISA

Image 1. Black line: Control Antigen (100 ng), Purple line: Antigen(10 ng), Blue line: Antigen (50 ng), Red line: Antigen (100 ng),



Flow Cytometry

Image 2. Flow cytometric analysis of HEK293 cells using PHC1 mouse mAb (green) and negative control (red).



Western Blotting

Image 3. Western blot analysis using PHC1 mAb against human PHC1 recombinant protein. (Expected MW is 52.8 kDa)

Please check the [product details page](#) for more images. Overall 4 images are available for ABIN1724838.