



[Go to Product page](#)

Datasheet for ABIN1724875

anti-CDX1 antibody (AA 122-227)

3 Images

2 Publications

Overview

Quantity:	0.1 mg
Target:	CDX1
Binding Specificity:	AA 122-227
Reactivity:	Human
Host:	Mouse
Clonality:	Monoclonal
Conjugate:	This CDX1 antibody is un-conjugated
Application:	Western Blotting (WB), ELISA

Product Details

Immunogen:	Purified recombinant fragment of human CDX1 (AA: 122-227) expressed in E. coli.
Clone:	1B11A9
Isotype:	IgG2a
Purification:	purified

Target Details

Target:	CDX1
Alternative Name:	CDX1 (CDX1 Products)
Background:	This gene is a member of the caudal-related homeobox transcription factor gene family. The encoded DNA-binding protein regulates intestine-specific gene expression and enterocyte

Target Details

differentiation. It has been shown to induce expression of the intestinal alkaline phosphatase gene, and inhibit beta-catenin/T-cell factor transcriptional activity. ,

Molecular Weight: 28.1 kDa

Gene ID: 1044

HGNC: 1044

Application Details

Application Notes: ELISA: 1:10000, WB: 1:500 - 1:2000

Restrictions: For Research Use only

Handling

Format: Liquid

Buffer: Purified antibody in PBS with 0.05 % sodium azide

Preservative: Sodium azide

Precaution of Use: This product contains Sodium azide: a POISONOUS AND HAZARDOUS SUBSTANCE which should be handled by trained staff only.

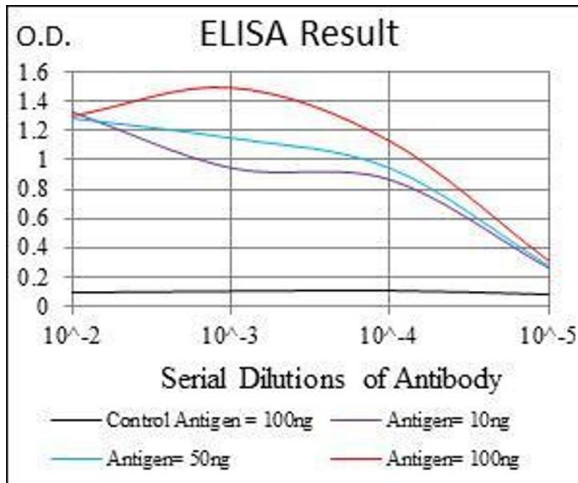
Storage: 4 °C/-20 °C

Storage Comment: 4°C, -20°C for long term storage

Publications

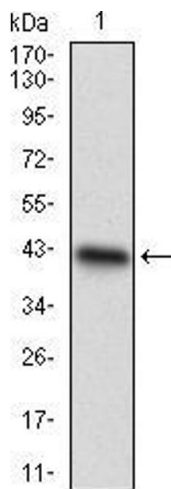
Product cited in: Rau, Rogler, Frischauf, Jung, Konturek, Dimmler, Faller, Sehnert, El-Rifai, Hartmann, Voll, Schneider-Stock: "Methylation-dependent activation of CDX1 through NF-κB: a link from inflammation to intestinal metaplasia in the human stomach." in: **The American journal of pathology**, Vol. 181, Issue 2, pp. 487-98, (2012) ([PubMed](#)).

Kang, Lee, Kim, Lee, Lee, Park, Kim, Jung, Song: "CDX1 and CDX2 expression in intestinal metaplasia, dysplasia and gastric cancer." in: **Journal of Korean medical science**, Vol. 26, Issue 5, pp. 647-53, (2011) ([PubMed](#)).



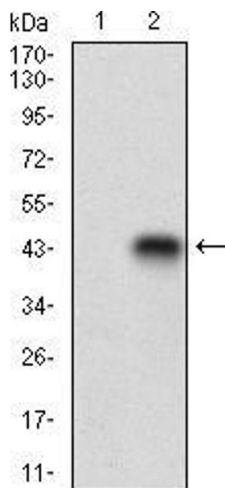
ELISA

Image 1. Black line: Control Antigen (100 ng), Purple line: Antigen(10 ng), Blue line: Antigen (50 ng), Red line: Antigen (100 ng),



Western Blotting

Image 2. Western blot analysis using CDX1 mAb against human CDX1 recombinant protein. (Expected MW is 37.9 kDa)



Western Blotting

Image 3. Western blot analysis using CDX1 mAb against HEK293 (1) and CDX1 (AA: 122-227)-hlgGfc transfected HEK293 (2) cell lysate.