

Datasheet for ABIN1724903
anti-IGFBP7 antibody (AA 52-156)

5 Images

1 Publication

[Go to Product page](#)

Overview

Quantity:	0.1 mg
Target:	IGFBP7
Binding Specificity:	AA 52-156
Reactivity:	Human
Host:	Mouse
Clonality:	Monoclonal
Conjugate:	This IGFBP7 antibody is un-conjugated
Application:	Western Blotting (WB), ELISA, Immunohistochemistry (IHC)

Product Details

Immunogen:	Purified recombinant fragment of human IGFBP7 (AA: 52-156) expressed in E. coli.
Clone:	1D9E7
Isotype:	IgG1
Purification:	purified

Target Details

Target:	IGFBP7
Alternative Name:	IGFBP7 (IGFBP7 Products)
Background:	Description: This gene encodes a member of the insulin-like growth factor (IGF)-binding protein (IGFBP) family. IGFBPs bind IGFs with high affinity, and regulate IGF availability in body fluids

Target Details

and tissues and modulate IGF binding to its receptors. This protein binds IGF-I and IGF-II with relatively low affinity, and belongs to a subfamily of low-affinity IGFBPs. It also stimulates prostacyclin production and cell adhesion. Alternatively spliced transcript variants encoding different isoforms have been described for this gene, and one variant has been associated with retinal arterial macroaneurysm (PMID:21835307). ,

Aliases: AGM, PSF, TAF, FSTL2, IBP-7, MAC25, IGFBP-7, RAMSVPS, IGFBP-7v, IGFBPRP1

Molecular Weight: 29.1 kDa

Gene ID: 3490

HGNC: 3490

Pathways: [Growth Factor Binding](#)

Application Details

Application Notes: ELISA: 1:10000, WB: 1:500 - 1:2000, IHC: 1:200 - 1:1000

Restrictions: For Research Use only

Handling

Format: Liquid

Buffer: Purified antibody in PBS with 0.05 % sodium azide

Preservative: Sodium azide

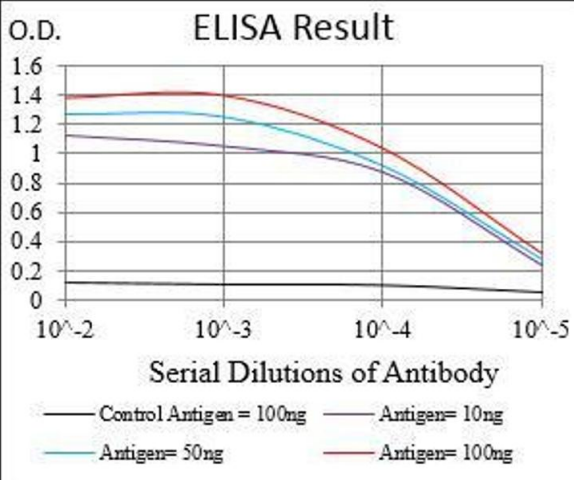
Precaution of Use: This product contains Sodium azide: a POISONOUS AND HAZARDOUS SUBSTANCE which should be handled by trained staff only.

Storage: 4 °C/-20 °C

Storage Comment: 4°C, -20°C for long term storage

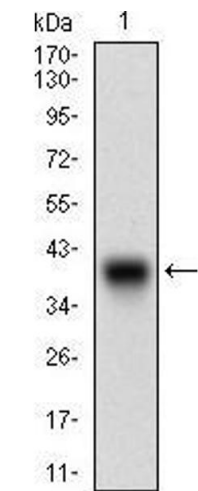
Publications

Product cited in: Yoshida, Ishikawa, Niitsu, Nakazato, Watanabe, Shiraishi, Shiina, Hashimoto, Kanahara, Hasegawa, Enohara, Kimura, Iyo, Hashimoto: "Decreased serum levels of mature brain-derived neurotrophic factor (BDNF), but not its precursor proBDNF, in patients with major depressive disorder." in: **PLoS ONE**, Vol. 7, Issue 8, pp. e42676, (2012) ([PubMed](#)).



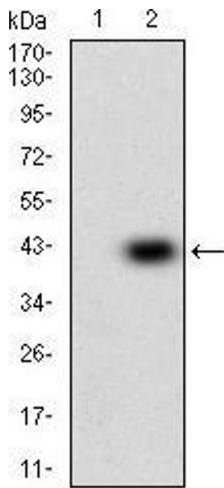
ELISA

Image 1. Black line: Control Antigen (100 ng), Purple line: Antigen(10 ng), Blue line: Antigen (50 ng), Red line: Antigen (100 ng),



Western Blotting

Image 2. Western blot analysis using IGFBP7 mAb against human IGFBP7 recombinant protein. (Expected MW is 36 kDa)



Western Blotting

Image 3. Western blot analysis using IGFBP7 mAb against HEK293 (1) and IGFBP7 (AA: 52-156)-hlgGfC transfected HEK293 (2) cell lysate.

Please check the [product details page](#) for more images. Overall 5 images are available for ABIN1724903.