

Datasheet for ABIN1724914  
**anti-MME antibody (AA 52-246)**[Go to Product page](#)

6 Images

1 Publication

## Overview

Quantity:	0.1 mg
Target:	MME
Binding Specificity:	AA 52-246
Reactivity:	Human
Host:	Mouse
Clonality:	Monoclonal
Conjugate:	This MME antibody is un-conjugated
Application:	Western Blotting (WB), Immunohistochemistry (IHC), ELISA

## Product Details

Immunogen:	Purified recombinant fragment of human CD10 (AA: 52-246) expressed in E. coli.
Clone:	7D4B1
Isotype:	IgG1
Purification:	purified

## Target Details

Target:	MME
Alternative Name:	CD10 ( <a href="#">MME Products</a> )
Target Type:	Chemical
Background:	Description: This gene encodes a common acute lymphocytic leukemia antigen that is an

## Target Details

important cell surface marker in the diagnosis of human acute lymphocytic leukemia (ALL). This protein is present on leukemic cells of pre-B phenotype, which represent 85 % of cases of ALL. This protein is not restricted to leukemic cells, however, and is found on a variety of normal tissues. It is a glycoprotein that is particularly abundant in kidney, where it is present on the brush border of proximal tubules and on glomerular epithelium. The protein is a neutral endopeptidase that cleaves peptides at the amino side of hydrophobic residues and inactivates several peptide hormones including glucagon, enkephalins, substance P, neurotensin, oxytocin, and bradykinin. This gene, which encodes a 100-kD type II transmembrane glycoprotein, exists in a single copy of greater than 45 kb. The 5' untranslated region of this gene is alternatively spliced, resulting in four separate mRNA transcripts. The coding region is not affected by alternative splicing. ,

Aliases: MME, NEP, SFE, CALLA

Molecular Weight:	85.5 kDa
-------------------	----------

Gene ID:	4311
----------	------

HGNC:	4311
-------	------

Pathways:	<a href="#">RTK Signaling</a> , <a href="#">Peptide Hormone Metabolism</a> , <a href="#">Regulation of Systemic Arterial Blood Pressure by Hormones</a> , <a href="#">Smooth Muscle Cell Migration</a>
-----------	--

## Application Details

Application Notes:	ELISA: 1:10000, WB: 1:500 - 1:2000, IHC: 1:200 - 1:1000
--------------------	---

Restrictions:	For Research Use only
---------------	-----------------------

## Handling

Format:	Liquid
---------	--------

Buffer:	Purified antibody in PBS with 0.05 % sodium azide
---------	---

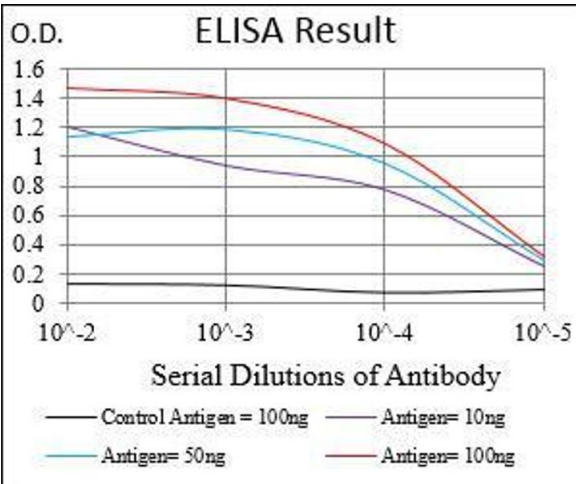
Preservative:	Sodium azide
---------------	--------------

Precaution of Use:	This product contains Sodium azide: a POISONOUS AND HAZARDOUS SUBSTANCE which should be handled by trained staff only.
--------------------	--

Storage:	4 °C/-20 °C
----------	-------------

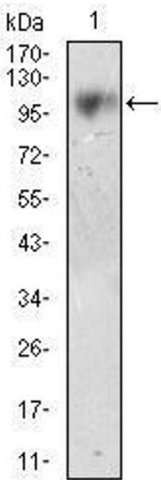
Storage Comment:	4°C, -20°C for long term storage
------------------	----------------------------------

Product cited in: Yoshida, Ishikawa, Niitsu, Nakazato, Watanabe, Shiraishi, Shiina, Hashimoto, Kanahara, Hasegawa, Enohara, Kimura, Iyo, Hashimoto: "Decreased serum levels of mature brain-derived neurotrophic factor (BDNF), but not its precursor proBDNF, in patients with major depressive disorder." in: **PLoS ONE**, Vol. 7, Issue 8, pp. e42676, (2012) ([PubMed](#)).



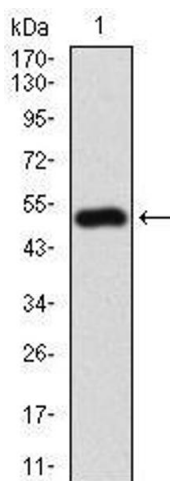
ELISA

**Image 1.** Black line: Control Antigen (100 ng), Purple line: Antigen(10 ng), Blue line: Antigen (50 ng), Red line: Antigen (100 ng),



Western Blotting

**Image 2.** Western blot analysis using CD10 mouse mAb against LNCAP cell lysate.



#### Western Blotting

**Image 3.** Western blot analysis using CD10 mAb against human CD10 (AA: 52-246) recombinant protein. (Expected MW is 41.4 kDa)

Please check the [product details page](#) for more images. Overall 6 images are available for ABIN1724914.