

Datasheet for ABIN1724917  
**anti-ADRP antibody (AA 286-437)**

8 Images

1 Publication

[Go to Product page](#)

## Overview

Quantity:	0.1 mg
Target:	ADRP (PLIN2)
Binding Specificity:	AA 286-437
Reactivity:	Human
Host:	Mouse
Clonality:	Monoclonal
Conjugate:	This ADRP antibody is un-conjugated
Application:	Western Blotting (WB), Immunohistochemistry (IHC), ELISA, Flow Cytometry (FACS), Immunocytochemistry (ICC)

## Product Details

Immunogen:	Purified recombinant fragment of human PLIN2 (AA: 286-437) expressed in E. coli.
Clone:	2C5H8
Isotype:	IgG1
Purification:	purified

## Target Details

Target:	ADRP (PLIN2)
Alternative Name:	PLIN2 ( <a href="#">PLIN2 Products</a> )
Background:	Description: The protein encoded by this gene belongs to the perilipin family, members of which

## Target Details

coat intracellular lipid storage droplets. This protein is associated with the lipid globule surface membrane material, and maybe involved in development and maintenance of adipose tissue. However, it is not restricted to adipocytes as previously thought, but is found in a wide range of cultured cell lines, including fibroblasts, endothelial and epithelial cells, and tissues, such as lactating mammary gland, adrenal cortex, Sertoli and Leydig cells, and hepatocytes in alcoholic liver cirrhosis, suggesting that it may serve as a marker of lipid accumulation in diverse cell types and diseases. Alternatively spliced transcript variants have been found for this gene. , , ,  
Aliases: ADFP, ADRP

Molecular Weight: 48 kDa

Gene ID: 123

HGNC: 123

Pathways: [Regulation of Lipid Metabolism by PPARalpha](#), [Lipid Metabolism](#)

## Application Details

Application Notes: ELISA: 1:10000, WB: 1:500 - 1:2000, IHC: 1:200 - 1:1000, ICC: 1:200 - 1:1000, FCM: 1:200 - 1:400

Restrictions: For Research Use only

## Handling

Format: Liquid

Buffer: Purified antibody in PBS with 0.05 % sodium azide

Preservative: Sodium azide

Precaution of Use: This product contains Sodium azide: a POISONOUS AND HAZARDOUS SUBSTANCE which should be handled by trained staff only.

Storage: 4 °C/-20 °C

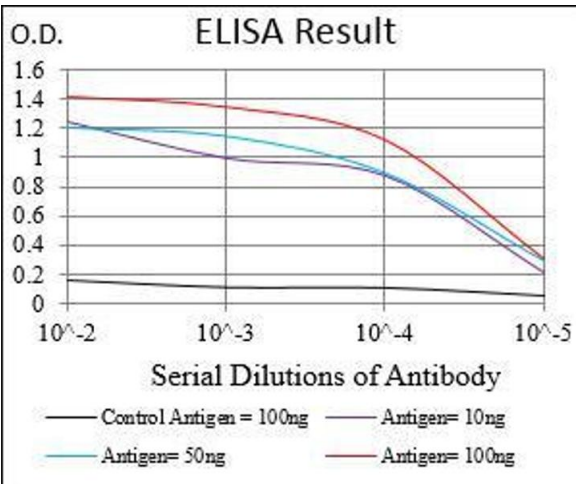
Storage Comment: 4°C, -20°C for long term storage

## Publications

Product cited in: Zaha, Young: "AMP-activated protein kinase regulation and biological actions in the heart." in: **Circulation research**, Vol. 111, Issue 6, pp. 800-14, (2012) ([PubMed](#)).

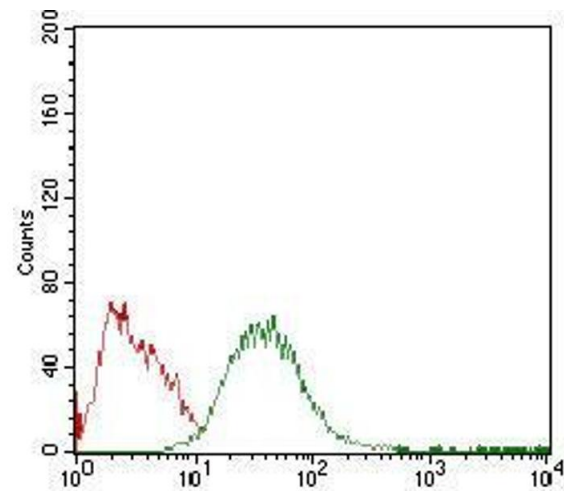
Oliveira, Zhang, Solis, Isackson, Bellahcene, Yavari, Pinter, Davies, Ge, Ashrafian, Walker, Carling,

Watkins, Casadei, Redwood: "AMP-activated protein kinase phosphorylates cardiac troponin I and alters contractility of murine ventricular myocytes." in: **Circulation research**, Vol. 110, Issue 9, pp. 1192-201, (2012) ([PubMed](#)).



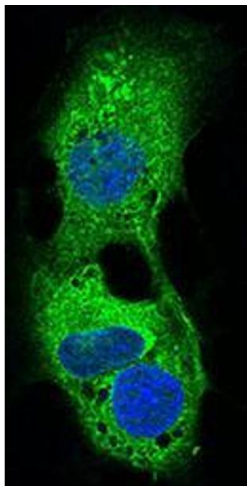
ELISA

**Image 1.** Black line: Control Antigen (100 ng), Purple line: Antigen(10 ng), Blue line: Antigen (50 ng), Red line: Antigen (100 ng),



Flow Cytometry

**Image 2.** Flow cytometric analysis of HepG2 cells using PLIN2 mouse mAb (green) and negative control (red).



Immunofluorescence

**Image 3.** Immunofluorescence analysis of HepG2 cells using PLIN2 mouse mAb (green). Blue: DRAQ5 fluorescent DNA dye. Secondary antibody from Fisher (Cat#: 35503)

## Images

---

Please check the [product details page](#) for more images. Overall 8 images are available for ABIN1724917.