

Datasheet for ABIN1724936

anti-Syndecan 1 antibody (AA 28-171)

8 Images

2 Publications

[Go to Product page](#)

Overview

Quantity:	0.1 mg
Target:	Syndecan 1 (SDC1)
Binding Specificity:	AA 28-171
Reactivity:	Human, Mouse
Host:	Mouse
Clonality:	Monoclonal
Conjugate:	This Syndecan 1 antibody is un-conjugated
Application:	Western Blotting (WB), ELISA, Flow Cytometry (FACS), Immunohistochemistry (IHC), Immunocytochemistry (ICC)

Product Details

Immunogen:	Purified recombinant fragment of human SDC1 (AA: 28-171) expressed in E. coli.
Clone:	1A3H4
Isotype:	IgG1
Purification:	purified

Target Details

Target:	Syndecan 1 (SDC1)
Alternative Name:	SDC1 (SDC1 Products)
Background:	Description: The protein encoded by this gene is a transmembrane (type I) heparan sulfate

Target Details

proteoglycan and is a member of the syndecan proteoglycan family. The syndecans mediate cell binding, cell signaling, and cytoskeletal organization and syndecan receptors are required for internalization of the HIV-1 tat protein. The syndecan-1 protein functions as an integral membrane protein and participates in cell proliferation, cell migration and cell-matrix interactions via its receptor for extracellular matrix proteins. Altered syndecan-1 expression has been detected in several different tumor types. While several transcript variants may exist for this gene, the full-length nature of only two have been described to date. These two represent the major variants of this gene and encode the same protein. , , , , ,

Aliases: SDC, CD138, SYND1, syndecan

Molecular Weight: 32.5 kDa

Gene ID: 6382

HGNC: 6382

Pathways: [Glycosaminoglycan Metabolic Process](#), [Regulation of Muscle Cell Differentiation](#), [Skeletal Muscle Fiber Development](#), [Lipid Metabolism](#)

Application Details

Application Notes: ELISA: 1:10000, WB: 1:500 - 1:2000, IHC: 1:200 - 1:1000, ICC: 1:200 - 1:1000, FCM: 1:200 - 1:400

Restrictions: For Research Use only

Handling

Format: Liquid

Buffer: Purified antibody in PBS with 0.05 % sodium azide.

Preservative: Sodium azide

Precaution of Use: This product contains Sodium azide: a POISONOUS AND HAZARDOUS SUBSTANCE which should be handled by trained staff only.

Storage: 4 °C/-20 °C

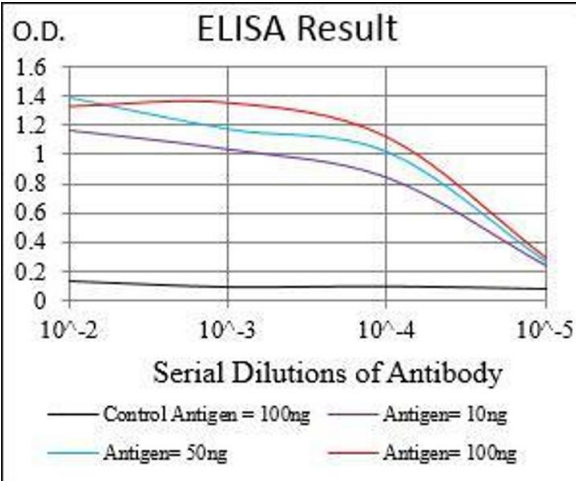
Storage Comment: 4°C, -20°C for long term storage

Publications

Product cited in: Nunez, Siegal, Reddy, Wei: "CD138 (syndecan-1) expression in bone-forming tumors." in: **American journal of clinical pathology**, Vol. 137, Issue 3, pp. 423-8, (2012) ([PubMed](#)).

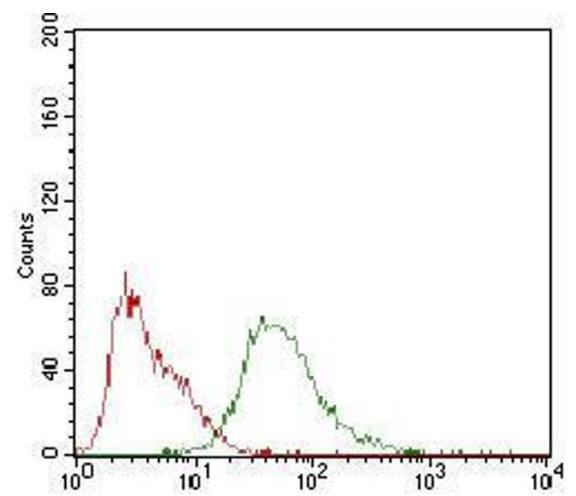
Karasneh, Ali, Shukla: "An important role for syndecan-1 in herpes simplex virus type-1 induced cell-to-cell fusion and virus spread." in: **PLoS ONE**, Vol. 6, Issue 9, pp. e25252, (2011) ([PubMed](#)).

Images



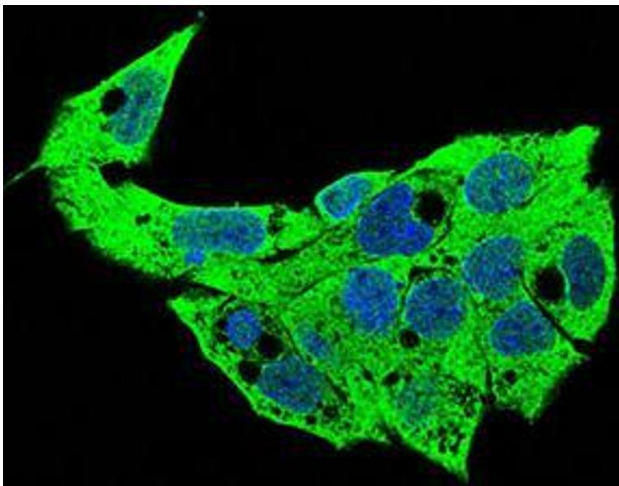
ELISA

Image 1. Black line: Control Antigen (100 ng), Purple line: Antigen(10 ng), Blue line: Antigen (50 ng), Red line: Antigen (100 ng),



Flow Cytometry

Image 2. Flow cytometric analysis of HepG2 cells using SDC1 mouse mAb (green) and negative control (red).



Immunofluorescence

Image 3. Immunofluorescence analysis of HepG2 cells using SDC1 mouse mAb (green). Blue: DRAQ5 fluorescent DNA dye. Secondary antibody from Fisher (Cat#: 35503)

Images

Please check the [product details page](#) for more images. Overall 8 images are available for ABIN1724936.