

Datasheet for ABIN1724940
anti-SMCP antibody (AA 1-116)

3 Images

1 Publication

[Go to Product page](#)

Overview

Quantity:	0.1 mg
Target:	SMCP
Binding Specificity:	AA 1-116
Reactivity:	Human
Host:	Mouse
Clonality:	Monoclonal
Conjugate:	This SMCP antibody is un-conjugated
Application:	ELISA, Western Blotting (WB)

Product Details

Immunogen:	Purified recombinant fragment of human SMCP (AA: 1-116) expressed in E. coli.
Clone:	5C10A2
Isotype:	IgG2b
Purification:	purified

Target Details

Target:	SMCP
Alternative Name:	SMCP (SMCP Products)
Background:	Description: Sperm mitochondria differ in morphology and subcellular localization from those of somatic cells. They are elongated, flattened, and arranged circumferentially to form a helical

Target Details

coiled sheath in the midpiece of the sperm flagellum. The protein encoded by this gene localizes to the capsule associated with the mitochondrial outer membranes and is thought to function in the organization and stabilization of the helical structure of the sperm's mitochondrial sheath. ,

Aliases: MCS, MCSP, HSMCSGEN1

Molecular Weight: 12.8 kDa

Gene ID: 4184

HGNC: 4184

Application Details

Application Notes: ELISA: 1:10000, WB: 1:500 - 1:2000

Restrictions: For Research Use only

Handling

Format: Liquid

Buffer: Purified antibody in PBS with 0.05 % sodium azide.

Preservative: Sodium azide

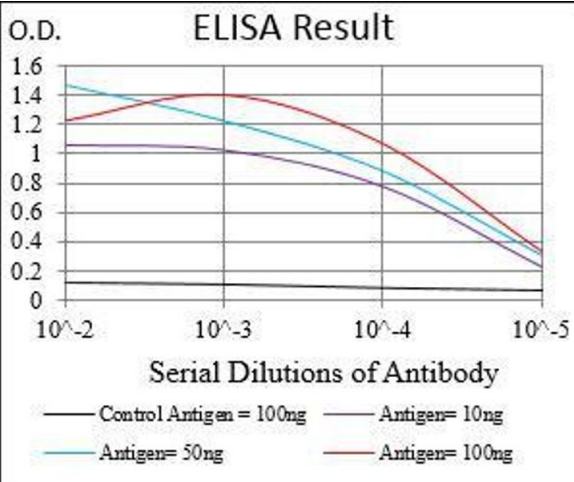
Precaution of Use: This product contains Sodium azide: a POISONOUS AND HAZARDOUS SUBSTANCE which should be handled by trained staff only.

Storage: 4 °C/-20 °C

Storage Comment: 4°C, -20°C for long term storage

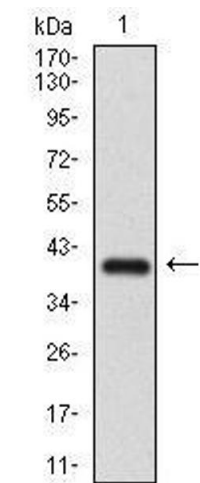
Publications

Product cited in: Nayernia, Adham, Burkhardt-Göttges, Neesen, Rieche, Wolf, Sancken, Kleene, Engel: "Asthenozoospermia in mice with targeted deletion of the sperm mitochondrion-associated cysteine-rich protein (Smcp) gene." in: **Molecular and cellular biology**, Vol. 22, Issue 9, pp. 3046-52, (2002) ([PubMed](#)).



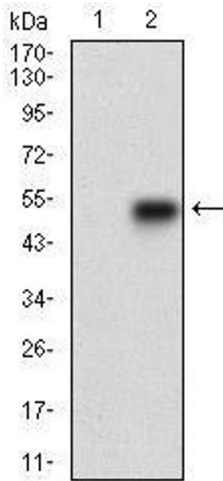
ELISA

Image 1. Black line: Control Antigen (100 ng), Purple line: Antigen(10 ng), Blue line: Antigen (50 ng), Red line: Antigen (100 ng),



Western Blotting

Image 2. Western blot analysis using SMCP mAb against human SMCP (AA: 1-116) recombinant protein. (Expected MW is 38.3 kDa)



Western Blotting

Image 3. Western blot analysis using SMCP mAb against HEK293 (1) and SMCP (AA: 1-116)-hlgGfC transfected HEK293 (2) cell lysate.