



Datasheet for ABIN1724943
anti-BPIFA2 antibody (AA 16-169)



[Go to Product page](#)

6 Images

Overview

Quantity:	0.1 mg
Target:	BPIFA2
Binding Specificity:	AA 16-169
Reactivity:	Human
Host:	Mouse
Clonality:	Monoclonal
Conjugate:	This BPIFA2 antibody is un-conjugated
Application:	Western Blotting (WB), ELISA, Flow Cytometry (FACS), Immunohistochemistry (IHC)

Product Details

Immunogen:	Purified recombinant fragment of mouse mSplunc2 (AA: 16-169) expressed in E. coli.
Clone:	3F8E4
Isotype:	IgG1
Purification:	purified

Target Details

Target:	BPIFA2
Abstract:	BPIFA2 Products
Background:	Description: Bpifa2 has strong antibacterial activity against P. aeruginosa., Aliases: Psp, Bpifa2e,msplunc2

Target Details

Molecular Weight: 24.8 kDa

Gene ID: 19194

HGNC: 19194

Application Details

Application Notes: ELISA: 1:10000, WB: 1:500 - 1:2000, IHC: 1:200 - 1:1000, FCM: 1:200 - 1:400

Restrictions: For Research Use only

Handling

Format: Liquid

Buffer: Purified antibody in PBS with 0.05 % sodium azide.

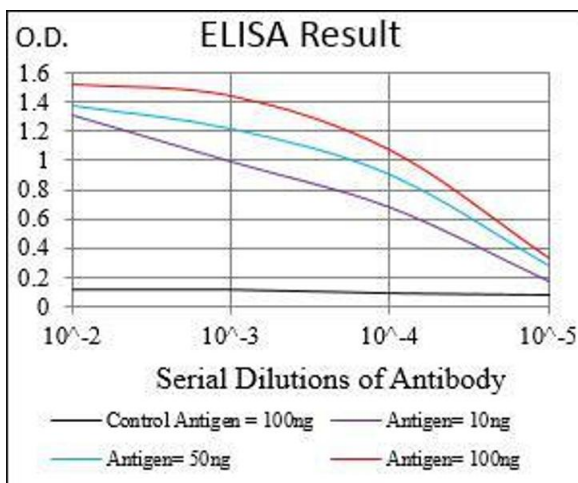
Preservative: Sodium azide

Precaution of Use: This product contains Sodium azide: a POISONOUS AND HAZARDOUS SUBSTANCE which should be handled by trained staff only.

Storage: 4 °C/-20 °C

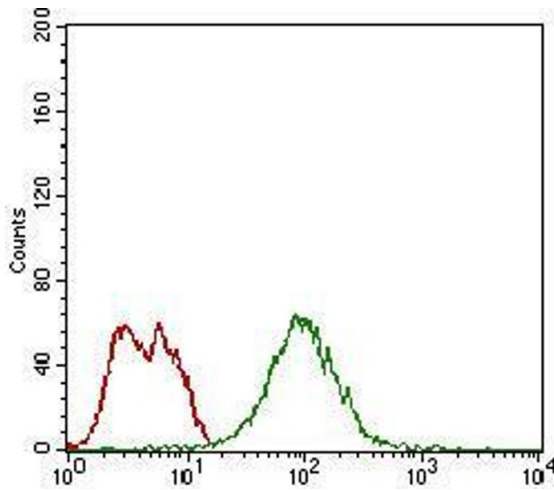
Storage Comment: 4°C, -20°C for long term storage

Images



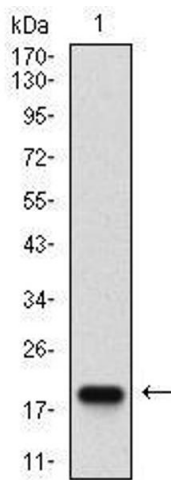
ELISA

Image 1. Black line: Control Antigen (100 ng), Purple line: Antigen(10 ng), Blue line: Antigen (50 ng), Red line: Antigen (100 ng),



Flow Cytometry

Image 2. Flow cytometric analysis of MCF-7 cells using mSplunc2 mouse mAb (green) and negative control (red).



Western Blotting

Image 3. Western blot analysis using mSplunc2 mAb against human mSplunc2 (AA:) recombinant protein. (Expected MW is 18.5 kDa)

Please check the [product details page](#) for more images. Overall 6 images are available for ABIN1724943.