

Datasheet for ABIN1731854

anti-Apelin Receptor antibody (3rd Cytoplasmic Domain)



[Go to Product page](#)

2 Images

Overview

Quantity:	50 µg
Target:	Apelin Receptor (APLNR)
Binding Specificity:	3rd Cytoplasmic Domain
Reactivity:	Human
Host:	Rabbit
Clonality:	Polyclonal
Application:	Immunohistochemistry (Paraffin-embedded Sections) (IHC (p))

Product Details

Immunogen:	Synthetic 20 amino acid peptide from 3rd cytoplasmic domain of human Apelin Receptor. Percent identity with other species by BLAST analysis: Human (100%), Gorilla (100%), Orangutan (100%), Gibbon (100%), Monkey (100%), Marmoset (100%), Mouse (100%)
Isotype:	IgG
Specificity:	Reacts with human Apelin Receptor
Cross-Reactivity (Details):	BLAST analysis of the peptide immunogen showed no homology with other human proteins.
Purification:	Antigen affinity purified

Target Details

Target:	Apelin Receptor (APLNR)
Alternative Name:	Apelin Receptor (APLNR Products)

Target Details

Background: Receptor for apelin coupled to G proteins that inhibit adenylate cyclase activity. Alternative coreceptor with CD4 for HIV-1 infection, may be involved in the development of AIDS dementia.

UniProt: [P35414](#)

Application Details

Application Notes: Working dilution: IHC - P (7 µg/mL - 14

Restrictions: For Research Use only

Handling

Format: Liquid

Concentration: 1 mg/mL

Buffer: PBS, Sodium azide 0.1 %

Preservative: Sodium azide

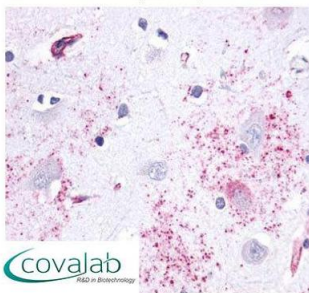
Precaution of Use: This product contains Sodium azide: a POISONOUS AND HAZARDOUS SUBSTANCE which should be handled by trained staff only.

Storage: 4 °C/-80 °C

Storage Comment: Long term: -70°C, Short term: +4°C

Images

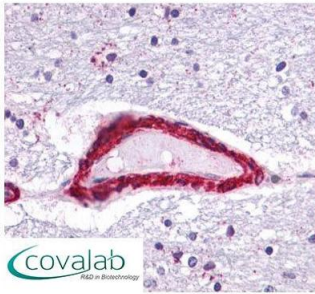
IHC : Apelin Receptor (Cytoplasmic Domain) antibody (pab70330)



Anti-Apelin Receptor antibody pab70330 IHC staining of human brain, astrocytes. Immunohistochemistry of formalin-fixed, paraffin-embedded tissue after heat-induced antigen retrieval.

Image 1.

**IHC : Apelin Receptor
(Cytoplasmic Domain) antibody**
(pab70330)



Anti-Apelin Receptor antibody pab70330 IHC staining of human brain, vessel. Immunohistochemistry of formalin-fixed, paraffin-embedded tissue after heat-induced antigen retrieval.

Image 2.