



[Go to Product page](#)

Datasheet for ABIN1732634  
**anti-CARD11 antibody (AA 18-238)**

2 Images

Overview

Quantity:	50 µL
Target:	CARD11
Binding Specificity:	AA 18-238
Reactivity:	Human
Host:	Rabbit
Clonality:	Polyclonal
Conjugate:	This CARD11 antibody is un-conjugated
Application:	Western Blotting (WB), Immunohistochemistry (Paraffin-embedded Sections) (IHC (p))

Product Details

Immunogen:	Recombinant protein fragment containing a sequence corresponding to a region within amino acids 18 and 238 of Human CARD11.
Isotype:	IgG
Specificity:	Reacts with human CARD11
Cross-Reactivity:	Mouse (Murine), Cow (Bovine)
Cross-Reactivity (Details):	Predicted cross-reactivity based on amino acid sequence homology: mouse (96 %), bovine (98 %).
Purification:	Antigen affinity purified

## Target Details

Target:	CARD11
Alternative Name:	CARD11 ( <a href="#">CARD11 Products</a> )
UniProt:	<a href="#">Q9BXL7</a>
Pathways:	<a href="#">TCR Signaling</a> , <a href="#">Fc-epsilon Receptor Signaling Pathway</a> , <a href="#">BCR Signaling</a>

## Application Details

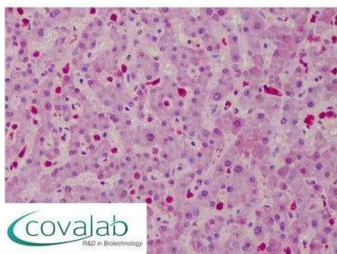
Application Notes:	Working dilution: IHC-P (10 µg/mL), WB (1:500 - 1:3000)
Restrictions:	For Research Use only

## Handling

Format:	Liquid
Concentration:	1 mg/mL
Buffer:	Tris-glycine 0.1 M, pH 7, glycerol 10 % , Thiomersal 0.01 %
Preservative:	Thimerosal (Merthiolate)
Precaution of Use:	This product contains Thimerosal (Merthiolate): a POISONOUS AND HAZARDOUS SUBSTANCE which should be handled by trained staff only.
Storage:	-20 °C
Storage Comment:	Aliquot and store at -20°C. Minimize freezing and thawing.

## Images

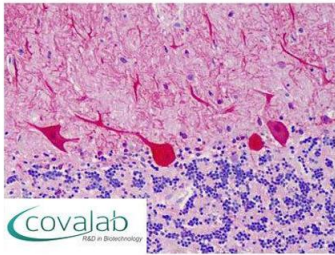
### IHC : CARD11 antibody (pab73315)



Anti-CARD11 antibody IHC staining of human liver.  
Immunohistochemistry of formalin-fixed,  
paraffin-embedded tissue after heat-induced antigen  
retrieval. Antibody pab73315 concentration 10 µg/ml.

Image 1.

**IHC : CARD11**  
**antibody**  
(pab73315)



Anti-CARD11 antibody IHC staining of human cerebellum. Immunohistochemistry of formalin-fixed, paraffin-embedded tissue after heat-induced antigen retrieval. Antibody pab73315 concentration 10 ug/ml.

Image 2.