

Datasheet for ABIN1732641  
**anti-CARD9 antibody (AA 521-536)**



[Go to Product page](#)

1 Image

## Overview

Quantity:	50 µg
Target:	CARD9
Binding Specificity:	AA 521-536
Reactivity:	Human
Host:	Rabbit
Clonality:	Polyclonal
Conjugate:	This CARD9 antibody is un-conjugated
Application:	Western Blotting (WB), Immunocytochemistry (ICC), Immunohistochemistry (Paraffin-embedded Sections) (IHC (p))

## Product Details

Immunogen:	Synthetic peptide from human CARD9.
Isotype:	IgG
Specificity:	Reacts with synthetic peptide (DRENTTGSDNTDTEGS) corresponding to amino acids 521 to 536 of human CARD9. The sequence is different from that of rat origin by two amino acids.
Purification:	Antigen affinity purified

## Target Details

Target:	CARD9
Alternative Name:	CARD9 ( <a href="#">CARD9 Products</a> )

## Target Details

UniProt:	<a href="#">Q9H257</a>
Pathways:	<a href="#">Activation of Innate immune Response</a>

## Application Details

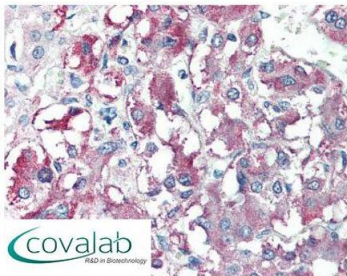
Application Notes:	Working dilution: ICC, IHC - P (10 µg/mL), WB (0.5 - 1 µg/mL)
Restrictions:	For Research Use only

## Handling

Concentration:	1 mg/mL
Buffer:	PBS, Sodium azide 0.02 %
Preservative:	Sodium azide
Precaution of Use:	This product contains Sodium azide: a POISONOUS AND HAZARDOUS SUBSTANCE which should be handled by trained staff only.
Storage:	4 °C/-20 °C
Storage Comment:	Short term 4°C, long term aliquot and store at -20°C, avoid freeze thaw cycles. Store undiluted.

## Images

### IHC : CARD9 (aa521-536) antibody (pab70516)



Anti-CARD9 antibody IHC staining of human adrenal.  
Immunohistochemistry of formalin-fixed, paraffin-embedded tissue after heat-induced antigen retrieval. Antibody pab70516 concentration 10 µg/ml.

Image 1.