

Datasheet for ABIN1732757

## anti-CCR10 antibody (2nd Extracellular Domain)



[Go to Product page](#)

### 1 Image

#### Overview

Quantity:	50 µg
Target:	CCR10
Binding Specificity:	2nd Extracellular Domain
Reactivity:	Human
Host:	Rabbit
Clonality:	Polyclonal
Conjugate:	This CCR10 antibody is un-conjugated
Application:	Immunohistochemistry (Paraffin-embedded Sections) (IHC (p))

#### Product Details

Immunogen:	Synthetic 16 amino acid peptide from 2nd extracellular domain of human CCR10. Percent identity with other species by BLAST analysis: Human (100%), Gorilla (100%), Dog (100%), Bat (100%), Pig (100%), Monkey (94%), Marmoset (94%), Bovine (94%), Panda ( ...
Isotype:	IgG
Specificity:	Reacts with human CCR10
Cross-Reactivity (Details):	BLAST analysis of the peptide immunogen showed no homology with other human proteins.
Purification:	Antigen affinity purified

#### Target Details

Target:	CCR10
---------	-------

## Target Details

Alternative Name: CCR10 ([CCR10 Products](#))

UniProt: [P46092](#)

## Application Details

Application Notes: Working dilution: IHC-P (11 µg/mL - 44

Restrictions: For Research Use only

## Handling

Concentration: 1 mg/mL

Buffer: PBS, Sodium azide 0.1 %

Preservative: Sodium azide

Precaution of Use: This product contains Sodium azide: a POISONOUS AND HAZARDOUS SUBSTANCE which should be handled by trained staff only.

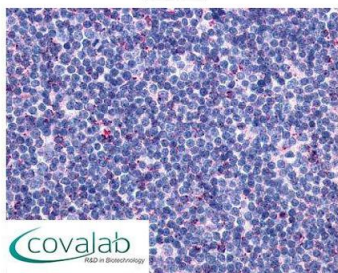
Storage: 4 °C/-80 °C

Storage Comment: Long term: -70°C, Short term: +4°C

## Images

### IHC : CCR10 (Extracellular Domain) antibody

(pab70558)



Anti-CCR10 antibody pab70558 IHC staining of human thymus. Immunohistochemistry of formalin-fixed, paraffin-embedded tissue after heat-induced antigen retrieval.

Image 1.