



Datasheet for ABIN1732790

anti-CCRL1 antibody (1st Cytoplasmic Domain)



[Go to Product page](#)

1 Image

Overview

Quantity:	50 µg
Target:	CCRL1
Binding Specificity:	1st Cytoplasmic Domain
Reactivity:	Human
Host:	Rabbit
Clonality:	Polyclonal
Conjugate:	This CCRL1 antibody is un-conjugated
Application:	Immunohistochemistry (Paraffin-embedded Sections) (IHC (p))

Product Details

Immunogen:	Synthetic 16 amino acid peptide from 1st cytoplasmic domain of human CCRL1. Percent identity with other species by BLAST analysis: Human (100%), Gorilla (100%), Gibbon (100%), Monkey (100%), Mouse (100%), Rat (100%), Dog (100%), Bat (100%), Elephant ...
Isotype:	IgG
Specificity:	Reacts with human CCRL1
Cross-Reactivity (Details):	BLAST analysis of the peptide immunogen showed no homology with other human proteins, except CCR6 (63 %).
Purification:	Antigen affinity purified

Target Details

Target:	CCRL1
---------	-------

Target Details

Alternative Name: CCRL1 ([CCRL1 Products](#))

UniProt: [Q9NPB9](#)

Application Details

Application Notes: Working dilution: IHC-P (24 µg/mL)

Restrictions: For Research Use only

Handling

Concentration: 1 mg/mL

Buffer: PBS, Sodium azide 0.1 %

Preservative: Sodium azide

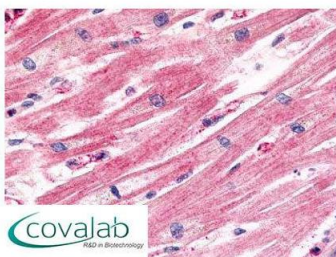
Precaution of Use: This product contains Sodium azide: a POISONOUS AND HAZARDOUS SUBSTANCE which should be handled by trained staff only.

Storage: 4 °C/-80 °C

Storage Comment: Long term: -70°C, Short term: +4°C

Images

IHC : CCRL1 (Cytoplasmic Domain) antibody (pab70584)



Anti-CCRL1 antibody pab70584 IHC staining of human heart, cardiac myocytes. Immunohistochemistry of formalin-fixed, paraffin-embedded tissue after heat-induced antigen retrieval.

Image 1.