

Datasheet for ABIN1733319  
**anti-XPO1 antibody (AA 390-408)**

2 Images



[Go to Product page](#)

## Overview

Quantity:	50 µg
Target:	XPO1
Binding Specificity:	AA 390-408
Reactivity:	Human, Mouse, Rat, Cow, Dog, Monkey
Host:	Rabbit
Clonality:	Polyclonal
Conjugate:	This XPO1 antibody is un-conjugated
Application:	Western Blotting (WB), Immunohistochemistry (Paraffin-embedded Sections) (IHC (p))

## Product Details

Immunogen:	Synthetic peptide from human XPO1 / CRM1.
Isotype:	IgG
Specificity:	Reacts with human CRM1
Cross-Reactivity:	Mouse (Murine), Cow (Bovine), Dog (Canine), Rat (Rattus)
Cross-Reactivity (Details):	Cross reacts with bovine, monkey, canine, mouse and rat protein.
Purification:	Purified (protein G)

## Target Details

Target:	XPO1
Alternative Name:	CRM1 ( <a href="#">XPO1 Products</a> )

## Target Details

Gene ID: 7514

Pathways: [M Phase](#)

## Application Details

Application Notes: Working dilution: Optimal dilution should be determined by the end user.  
The following are guidelines only:  
IHC-P (10 µg/mL), WB (1 - 3 µg/mL)

Restrictions: For Research Use only

## Handling

Format: Liquid

Concentration: 0.5 mg/mL

Buffer: PBS, 0.2 % gelatin, Sodium azide 0.05 %

Preservative: Sodium azide

Precaution of Use: This product contains Sodium azide: a POISONOUS AND HAZARDOUS SUBSTANCE which should be handled by trained staff only.

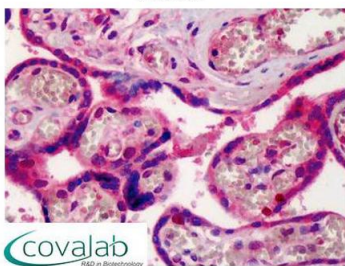
Storage: 4 °C/-20 °C

Storage Comment: Short term 4°C, long term aliquot and store at -20°C, avoid freeze thaw cycles.

## Images

### IHC : CRM1 (aa390-408) antibody

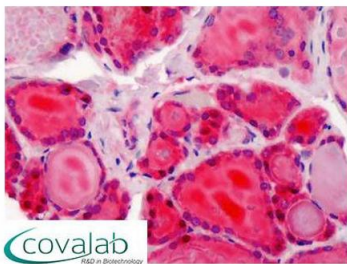
(pab74465)



Anti-CRM1 antibody IHC staining of human placenta.  
Immunohistochemistry of formalin-fixed, paraffin-embedded  
tissue after heat-induced antigen retrieval. Antibody  
pab74465 concentration 10 µg/ml.

Image 1.

**IHC : CRM1**  
**(aa390-408) antibody**  
(pab74465)



Anti-CRM1 antibody IHC staining of human thyroid.  
Immunohistochemistry of formalin-fixed, paraffin-embedded  
tissue after heat-induced antigen retrieval. Antibody  
pab74465 concentration 10 ug/ml.

**Image 2.**