



[Go to Product page](#)

Datasheet for ABIN1733372
anti-CUEDC2 antibody (C-Term)

2 Images

Overview

Quantity:	50 µg
Target:	CUEDC2
Binding Specificity:	C-Term
Reactivity:	Human, Mouse, Rat
Host:	Rabbit
Clonality:	Polyclonal
Application:	ELISA, Western Blotting (WB), Immunohistochemistry (Paraffin-embedded Sections) (IHC (p)), Immunocytochemistry (ICC)

Product Details

Immunogen:	19 amino acid peptide from near the carboxy terminus of human CUEDC2.
Isotype:	IgG
Specificity:	Reacts with CUEDC2 from human, mouse and rat
Purification:	Antigen affinity purified

Target Details

Target:	CUEDC2
Alternative Name:	CUEDC2 (CUEDC2 Products)
UniProt:	Q9H467

Application Details

Application Notes: Working dilution: ELISA, ICC, IHC-P (5 µg/mL), WB (1 - 2 µg/mL)

Restrictions: For Research Use only

Handling

Concentration: 1 mg/mL

Buffer: PBS, Sodium azide 0.02 %

Preservative: Sodium azide

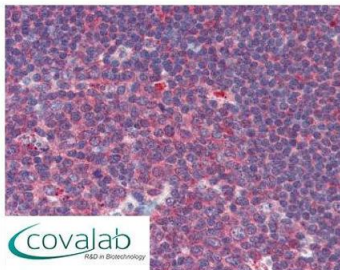
Precaution of Use: This product contains Sodium azide: a POISONOUS AND HAZARDOUS SUBSTANCE which should be handled by trained staff only.

Storage: 4 °C/-20 °C

Storage Comment: Short term 4°C, long term aliquot and store at -20°C, avoid freeze thaw cycles. Store undiluted.

Images

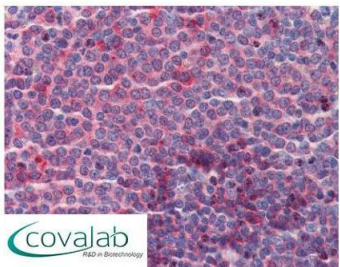
IHC : CUEDC2 (C-Terminus) antibody (pab70709)



Anti-CUEDC2 antibody IHC staining of human tonsil. Immunohistochemistry of formalin-fixed, paraffin-embedded tissue after heat-induced antigen retrieval. Antibody pab70709 concentration 5 µg/ml.

Image 1.

IHC : CUEDC2 (C-Terminus) antibody (pab70709)



Anti-CUEDC2 antibody IHC staining of human spleen. Immunohistochemistry of formalin-fixed, paraffin-embedded tissue after heat-induced antigen retrieval. Antibody pab70709 concentration 5 µg/ml.

Image 2.