



[Go to Product page](#)

Datasheet for ABIN1733454

anti-CYP26B1 antibody (AA 160-396)

2 Images

Overview

| | |
|----------------------|--|
| Quantity: | 50 µL |
| Target: | CYP26B1 |
| Binding Specificity: | AA 160-396 |
| Reactivity: | Human |
| Host: | Rabbit |
| Clonality: | Polyclonal |
| Application: | Western Blotting (WB), Immunohistochemistry (Paraffin-embedded Sections) (IHC (p)) |

Product Details

| | |
|-----------------------------|---|
| Immunogen: | Recombinant protein fragment containing a sequence corresponding to a region within amino acids 160 and 396 of Human Cytochrome P450 26B. |
| Isotype: | IgG |
| Specificity: | Reacts with human CYP26B1 |
| Cross-Reactivity: | Mouse (Murine), Rat (Rattus) |
| Cross-Reactivity (Details): | Predicted cross-reactivity based on amino acid sequence homology: mouse (94 %), rat (94 %). |
| Purification: | Antigen affinity purified |

Target Details

| | |
|-------------------|--|
| Target: | CYP26B1 |
| Alternative Name: | CYP26B1 (CYP26B1 Products) |

Target Details

UniProt: [Q9NR63](#)

Pathways: [Retinoic Acid Receptor Signaling Pathway](#), [Regulation of Muscle Cell Differentiation](#),
[Monocarboxylic Acid Catabolic Process](#)

Application Details

Application Notes: Working dilution: IHC-P (10 µg/mL), WB (1:500 - 1:3000)

Restrictions: For Research Use only

Handling

Format: Liquid

Concentration: 1 mg/mL

Buffer: Tris-glycine 0.1 M, pH 7, glycerol 10 % , Thiomersal 0.01 %

Preservative: Thimerosal (Merthiolate)

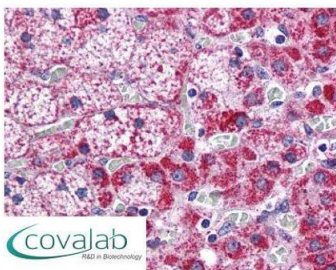
Precaution of Use: This product contains Thimerosal (Merthiolate): a POISONOUS AND HAZARDOUS SUBSTANCE which should be handled by trained staff only.

Storage: -20 °C

Storage Comment: Aliquot and store at -20°C. Minimize freezing and thawing.

Images

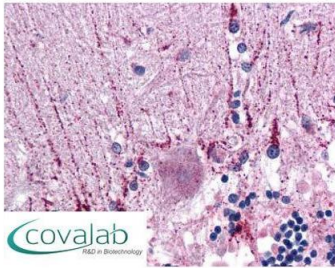
IHC : CYP26B1 antibody (pab73336)



Anti-CYP26B1 antibody IHC staining of human adrenal. Immunohistochemistry of formalin-fixed, paraffin-embedded tissue after heat-induced antigen retrieval. Antibody pab73336 concentration 10 µg/ml.

Image 1.

**IHC : CYP26B1
antibody**
(pab73336)



Anti-CYP26B1 antibody IHC staining of human brain, cerebellum. Immunohistochemistry of formalin-fixed, paraffin-embedded tissue after heat-induced antigen retrieval. Antibody pab73336 concentration 10 ug/ml.

Image 2.