



[Go to Product page](#)

Datasheet for ABIN1733462

## anti-CasLTR2 antibody (1st Extracellular Domain)

### 1 Image

#### Overview

Quantity:	50 µg
Target:	CasLTR2 (CYSLTR2)
Binding Specificity:	1st Extracellular Domain
Reactivity:	Human
Host:	Rabbit
Clonality:	Polyclonal
Application:	ELISA, Immunohistochemistry (Paraffin-embedded Sections) (IHC (p))

#### Product Details

Immunogen:	Synthetic 17 amino acid peptide from 1st extracellular domain of human CYSLTR2 / CYSLT2. Percent identity with other species by BLAST analysis: Human (100%), Gibbon (100%), Marmoset (100%), Horse (100%), Gorilla (94%), Monkey (94%), Mouse (94%), Pand ...
Isotype:	IgG
Specificity:	Reacts with human CYSLTR2 / CYSLT2
Cross-Reactivity (Details):	BLAST analysis of the peptide immunogen showed no homology with other human proteins, except GPR109B (59 %), OXGR1 (59 %), GPR81 (59 %).
Purification:	Antigen affinity purified

#### Target Details

Target:	CasLTR2 (CYSLTR2)
Alternative Name:	CYSLTR2 / CYSLT2 ( <a href="#">CYSLTR2 Products</a> )

## Target Details

---

UniProt: [Q9NS75](#)

## Application Details

---

Application Notes: Working dilution: ELISA, IHC - P (10 µg/mL)

Restrictions: For Research Use only

## Handling

---

Format: Liquid

Concentration: 1 mg/mL

Buffer: PBS, Sodium azide 0.1 %

Preservative: Sodium azide

Precaution of Use: This product contains Sodium azide: a POISONOUS AND HAZARDOUS SUBSTANCE which should be handled by trained staff only.

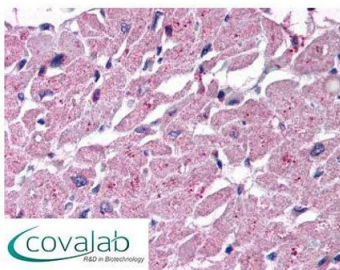
Storage: 4 °C/-80 °C

Storage Comment: Long term: -70°C, Short term: +4°C

## Images

---

### IHC : CYSLTR2 / CYSLT2 (Extracellular Domain) antibody (pab70740)



Anti-CYSLTR2 / CYSLT2 antibody pab70740 IHC staining of human heart. Immunohistochemistry of formalin-fixed, paraffin-embedded tissue after heat-induced antigen retrieval.

Image 1.