



[Go to Product page](#)

Datasheet for ABIN1733464

anti-CasLTR2 antibody (C-Term, Cytoplasmic Domain)

1 Image

Overview

Quantity:	50 µg
Target:	CasLTR2 (CYSLTR2)
Binding Specificity:	C-Term, Cytoplasmic Domain
Reactivity:	Human
Host:	Rabbit
Clonality:	Polyclonal
Conjugate:	This CasLTR2 antibody is un-conjugated
Application:	ELISA, Immunohistochemistry (Paraffin-embedded Sections) (IHC (p))

Product Details

Immunogen:	Synthetic 20 amino acid peptide from C-terminal cytoplasmic domain of human CYSLTR2 / CYSLT2. Percent identity with other species by BLAST analysis: Human (100%), Gorilla (100%), Gibbon (95%), Marmoset (80%).
Isotype:	IgG
Specificity:	Reacts with human CYSLTR2 / CYSLT2
Cross-Reactivity (Details):	BLAST analysis of the peptide immunogen showed no homology with other human proteins, except SNX11 (55 %).
Purification:	Antigen affinity purified

Target Details

Target:	CasLTR2 (CYSLTR2)
---------	-------------------

Target Details

Alternative Name: CYSLTR2 / CYSLT2 ([CYSLTR2 Products](#))

UniProt: [Q9NS75](#)

Application Details

Application Notes: Working dilution: ELISA, IHC - P (10 µg/mL)

Restrictions: For Research Use only

Handling

Format: Liquid

Concentration: 1 mg/mL

Buffer: PBS, Sodium azide 0.1 %

Preservative: Sodium azide

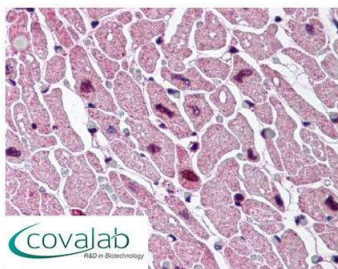
Precaution of Use: This product contains Sodium azide: a POISONOUS AND HAZARDOUS SUBSTANCE which should be handled by trained staff only.

Storage: 4 °C/-80 °C

Storage Comment: Long term: -70°C, Short term: +4°C

Images

IHC : CYSLTR2 / CYSLT2 (C-Terminus) antibody (pab70738)



Anti-CYSLTR2 / CYSLT2 antibody pab70738 IHC staining of human heart. Immunohistochemistry of formalin-fixed, paraffin-embedded tissue after heat-induced antigen retrieval.

Image 1.