



[Go to Product page](#)

Datasheet for ABIN1733599  
**anti-Derlin-3 antibody**

1 Image

### Overview

Quantity:	50 µg
Target:	Derlin-3 (DERL3)
Reactivity:	Human
Host:	Rabbit
Clonality:	Polyclonal
Conjugate:	This Derlin-3 antibody is un-conjugated
Application:	Western Blotting (WB), ELISA, Immunohistochemistry (Paraffin-embedded Sections) (IHC (p))

### Product Details

Immunogen:	Synthetic peptide from human DERL3.
Isotype:	IgG
Specificity:	Reacts with the N-terminus part of human DERL3 (Derlin-3)
Purification:	Antigen affinity purified

### Target Details

Target:	Derlin-3 (DERL3)
Alternative Name:	DERL3 ( <a href="#">DERL3 Products</a> )
UniProt:	<a href="#">Q96Q80</a>
Pathways:	<a href="#">ER-Nucleus Signaling</a>

## Application Details

---

Application Notes: Working dilution: ELISA (1 µg/mL), IHC-P (20 µg/mL), WB (1 µg/mL)

---

Restrictions: For Research Use only

---

## Handling

---

Format: Liquid

---

Concentration: 0.5 mg/mL

---

Buffer: PBS, glycerol 50 % , Sodium azide 0.01 %

---

Preservative: Sodium azide

---

Precaution of Use: This product contains Sodium azide: a POISONOUS AND HAZARDOUS SUBSTANCE which should be handled by trained staff only.

---

Storage: 4 °C/-20 °C

---

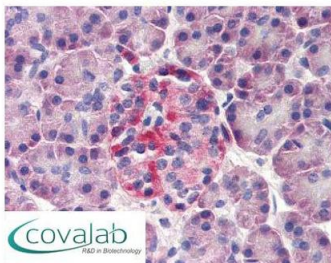
Storage Comment: +4°C or -20°C, Avoid repeated freezing and thawing.

---

## Images

---

### IHC : DERL3 (N-Terminus) antibody (pab72212)



Anti-DERL3 antibody IHC staining of human pancreas.  
Immunohistochemistry of formalin-fixed, paraffin-  
embedded tissue after heat-induced antigen retrieval.  
Antibody pab72212 concentration 20 µg/ml.

Image 1.