

Datasheet for ABIN1733750
anti-DPP7 antibody (Extracellular Domain)[Go to Product page](#)

1 Image

Overview

Quantity:	50 µg
Target:	DPP7
Binding Specificity:	Extracellular Domain
Reactivity:	Human
Host:	Rabbit
Clonality:	Polyclonal
Conjugate:	This DPP7 antibody is un-conjugated
Application:	Immunohistochemistry (Paraffin-embedded Sections) (IHC (p))

Product Details

Immunogen:	Synthetic 16 amino acid peptide from extracellular domain of human DPP7 / DPP2. Percent identity with other species by BLAST analysis: Human (100%), Gorilla (100%), Orangutan (100%), Marmoset (100%), Gibbon (94%).
Isotype:	IgG
Specificity:	Reacts with human DPP7 / DPP2
Cross-Reactivity (Details):	BLAST analysis of the peptide immunogen showed no homology with other human proteins.
Purification:	Antigen affinity purified

Target Details

Target:	DPP7
---------	------

Target Details

Alternative Name: DPP7 / DPP2 ([DPP7 Products](#))

UniProt: [Q9UHL4](#)

Application Details

Application Notes: Working dilution: IHC - P (10 µg/mL)

Restrictions: For Research Use only

Handling

Format: Liquid

Concentration: 1 mg/mL

Buffer: PBS, Sodium azide 0.1 %

Preservative: Sodium azide

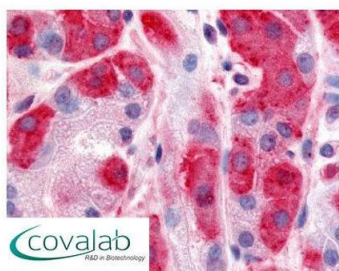
Precaution of Use: This product contains Sodium azide: a POISONOUS AND HAZARDOUS SUBSTANCE which should be handled by trained staff only.

Storage: 4 °C/-80 °C

Storage Comment: Long term: -70°C, Short term: +4°C

Images

IHC : DPP7 / DPP2 (Extracellular Domain) antibody (pab70794)



Anti-DPP7 / DPP2 antibody pab70794 IHC staining of human stomach. Immunohistochemistry of formalin-fixed, paraffin-embedded tissue after heat-induced antigen retrieval.

Image 1.