



[Go to Product page](#)

Datasheet for ABIN1733752
anti-DPP8 antibody (AA 1-39)

2 Images

Overview

Quantity:	50 µL
Target:	DPP8
Binding Specificity:	AA 1-39
Reactivity:	Human
Host:	Rabbit
Clonality:	Polyclonal
Application:	Western Blotting (WB), Immunohistochemistry (Paraffin-embedded Sections) (IHC (p)), Immunofluorescence (IF), Immunocytochemistry (ICC)

Product Details

Immunogen:	Synthetic peptide containing a sequence corresponding to a region within amino acids 1 and 39 of DPRP1.
Isotype:	IgG
Specificity:	Reacts with human DPP8
Purification:	Antigen affinity purified

Target Details

Target:	DPP8
Alternative Name:	DPP8 (DPP8 Products)
UniProt:	Q6V1X1

Application Details

Application Notes: Working dilution: ICC, IF (1:100 - 1:200), IHC-P (10 µg/mL), WB (1:500 - 1:3000)

Restrictions: For Research Use only

Handling

Format: Liquid

Concentration: 1 mg/mL

Buffer: Tris-glycine 0.1 M, pH 7, glycerol 10 %, Thiomersal 0.01 %

Preservative: Thimerosal (Merthiolate)

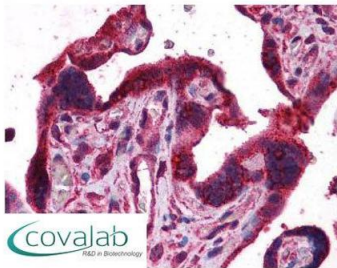
Precaution of Use: This product contains Thimerosal (Merthiolate): a POISONOUS AND HAZARDOUS SUBSTANCE which should be handled by trained staff only.

Storage: -20 °C

Storage Comment: Aliquot and store at -20°C. Minimize freezing and thawing.

Images

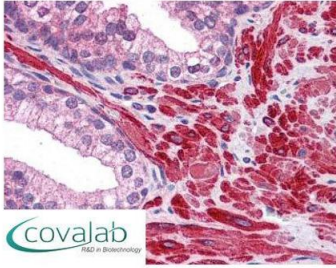
IHC : DPP8 antibody (pab73355)



Anti-DPP8 antibody IHC staining of human placenta.
Immunohistochemistry of formalin-fixed,
paraffin-embedded tissue after heat-induced antigen
retrieval. Antibody pab73355 concentration 10 µg/ml.

Image 1.

**IHC : DPP8
antibody**
(pab73355)



Anti-DPP8 antibody IHC staining of human prostate.
Immunohistochemistry of formalin-fixed,
paraffin-embedded tissue after heat-induced antigen
retrieval. Antibody pab73355 concentration 10 ug/ml.

Image 2.