



[Go to Product page](#)

Datasheet for ABIN1733973
anti-ELOVL5 antibody (N-Term)

2 Images

Overview

Quantity:	50 µg
Target:	ELOVL5
Binding Specificity:	N-Term
Reactivity:	Human, Rat, Mouse
Host:	Rabbit
Clonality:	Polyclonal
Conjugate:	This ELOVL5 antibody is un-conjugated
Application:	Immunohistochemistry (Paraffin-embedded Sections) (IHC (p))

Product Details

Immunogen:	Synthetic 15 amino acid peptide from N-terminus of human ELOVL5. Percent identity with other species by BLAST analysis: Human (100%), Gorilla (100%), Orangutan (100%), Gibbon (100%), Monkey (100%), Marmoset (100%), Turkey (100%), Chicken (100%) ...
Isotype:	IgG
Specificity:	Reacts with human ELOVL5
Cross-Reactivity (Details):	BLAST analysis of the peptide immunogen showed no homology with other human proteins.
Purification:	Antigen affinity purified

Target Details

Target:	ELOVL5
---------	--------

Target Details

Alternative Name: ELOVL5 ([ELOVL5 Products](#))

UniProt: [Q9NYP7](#)

Application Details

Application Notes: Working dilution: IHC - P (10 - 15 µg/mL)

Restrictions: For Research Use only

Handling

Format: Liquid

Concentration: 1 mg/mL

Buffer: PBS, Sodium azide 0.1 %

Preservative: Sodium azide

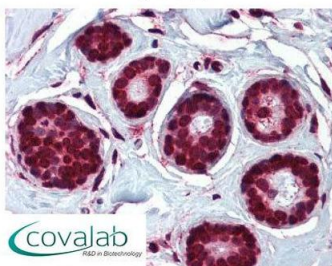
Precaution of Use: This product contains Sodium azide: a POISONOUS AND HAZARDOUS SUBSTANCE which should be handled by trained staff only.

Storage: 4 °C/-80 °C

Storage Comment: Long term: -70°C, Short term: +4°C

Images

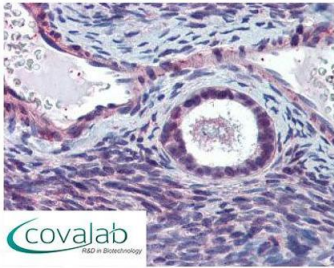
IHC : ELOVL5 (N-Terminus) antibody (pab70852)



Anti-ELOVL5 antibody pab70852 IHC staining of human breast. Immunohistochemistry of formalin-fixed, paraffin-embedded tissue after heat-induced antigen retrieval.

Image 1.

**IHC : ELOVL5
(N-Terminus) antibody**
(pab70852)



Anti-ELOVL5 antibody pab70852 IHC staining of human ovary. Immunohistochemistry of formalin-fixed, paraffin-embedded tissue after heat-induced antigen retrieval.

Image 2.