

Datasheet for ABIN1734333  
**anti-SLC40A1 antibody (AA 250-300)**[Go to Product page](#)

## 2 Images

## Overview

Quantity:	100 µL
Target:	SLC40A1
Binding Specificity:	AA 250-300
Reactivity:	Human
Host:	Rabbit
Clonality:	Polyclonal
Conjugate:	This SLC40A1 antibody is un-conjugated
Application:	Western Blotting (WB), Immunohistochemistry (IHC), Flow Cytometry (FACS), Immunocytochemistry (ICC), Immunofluorescence (IF)

## Product Details

Immunogen:	Synthetic peptide made to an internal portion of the human protein (within residues 250-300).
Isotype:	IgG
Specificity:	Reacts with human SLC40A1 protein
Purification:	Antigen affinity purified

## Target Details

Target:	SLC40A1
Alternative Name:	Ferroportin-1 ( <a href="#">SLC40A1 Products</a> )
Background:	SLC40A1 is an iron-regulated transporter assumed to play roles in intestinal iron absorption and

## Target Details

cellular iron release. It mediates iron efflux in the presence of ferroxidase. Defects in SLC40A1 cause hemochromatosis type 4 (HFE4), which is an autosomal dominant iron-loading disorder.

Pathways: [Transition Metal Ion Homeostasis](#)

## Application Details

Application Notes: Working dilution: Optimal dilution should be determined by the end user.  
The following are guidelines only:  
WB(1.0 µg/mL) ICC/ IF(1:500)

Restrictions: For Research Use only

## Handling

Format: Liquid

Concentration: 1 mg/mL

Buffer: Tris-glycine, NaCl 150 mM, ( pH 7.5), Sodium azide 0.05 %

Preservative: Sodium azide

Precaution of Use: This product contains Sodium azide: a POISONOUS AND HAZARDOUS SUBSTANCE which should be handled by trained staff only.

Storage: 4 °C/-20 °C

Storage Comment: Short term storage at +4°C. For extended periods store in aliquots at -20°C. Antibodies are guaranteed for 6 month from date of receipt.

Expiry Date: 6 months

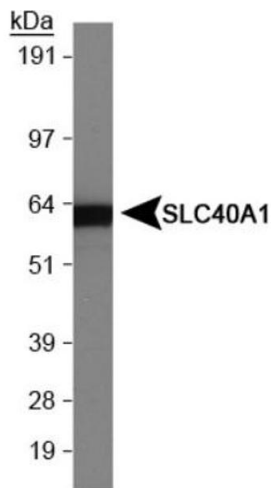


Image 1.

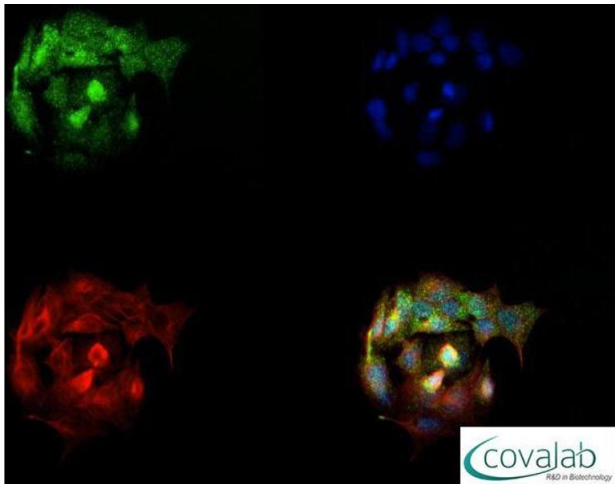


Image 2.