

Datasheet for ABIN1734383

**anti-FMNL2 antibody****1** Image[Go to Product page](#)

## Overview

Quantity:	50 µg
Target:	FMNL2
Reactivity:	Human, Mouse, Rat, Cow, Monkey
Host:	Rabbit
Clonality:	Polyclonal
Conjugate:	This FMNL2 antibody is un-conjugated
Application:	Western Blotting (WB), Immunohistochemistry (Paraffin-embedded Sections) (IHC (p))

## Product Details

Immunogen:	Synthetic peptide from human FMNL2.
Isotype:	IgG
Specificity:	Reacts with human FMNL2
Cross-Reactivity:	Mouse (Murine), Cow (Bovine), Rat (Rattus)
Cross-Reactivity (Details):	Cross reacts with bovine, monkey, mouse and rat protein.
Purification:	Purified (protein G)

## Target Details

Target:	FMNL2
Alternative Name:	FMNL2 ( <a href="#">FMNL2 Products</a> )
Gene ID:	114793

## Application Details

Application Notes:	Working dilution: Optimal dilutions should be determined by the end user. The following are guidelines only: IHC-P (5 - 10 µg/mL), WB (1 - 3 µg/mL)
Restrictions:	For Research Use only

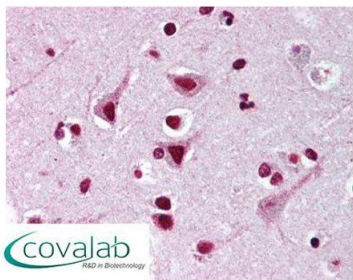
## Handling

Format:	Liquid
Concentration:	0.5 mg/mL
Buffer:	PBS, 0.05 % BSA, Sodium azide 0.05 %
Preservative:	Sodium azide
Precaution of Use:	This product contains Sodium azide: a POISONOUS AND HAZARDOUS SUBSTANCE which should be handled by trained staff only.
Storage:	4 °C/-20 °C
Storage Comment:	Short term 4°C, long term aliquot and store at -20°C, avoid freeze thaw cycles.

## Images

### IHC : FMNL2 antibody

(pab74477)



Anti-FMNL2 antibody IHC staining of human brain, cortex.  
Immunohistochemistry of formalin-fixed, paraffin-embedded  
tissue after heat-induced antigen retrieval. Antibody  
pab74477 concentration 10 µg/ml.

Image 1.