



[Go to Product page](#)

Datasheet for ABIN1734463
anti-FREM1 antibody (C-Term)

1 Image

Overview

Quantity:	50 µg
Target:	FREM1
Binding Specificity:	C-Term
Reactivity:	Human, Mouse
Host:	Rabbit
Clonality:	Polyclonal
Conjugate:	This FREM1 antibody is un-conjugated
Application:	ELISA, Western Blotting (WB), Immunocytochemistry (ICC), Immunohistochemistry (Paraffin-embedded Sections) (IHC (p))

Product Details

Immunogen:	FREM1 antibody was raised against a 15 amino acid peptide near the carboxy terminus of human FREM1.
Isotype:	IgG
Specificity:	Reacts with humanFREM1
Cross-Reactivity:	Mouse (Murine)
Cross-Reactivity (Details):	Cross reacts with mouse protein.
Purification:	Antigen affinity purified

Target Details

Target:	FREM1
Alternative Name:	FREM1 (FREM1 Products)
Gene ID:	158326

Application Details

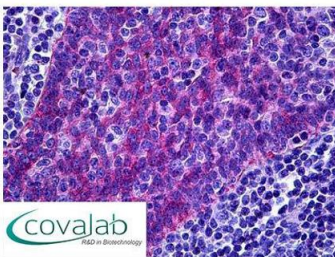
Application Notes:	Working dilution: Optimal dilutions should be determined by the end user. The following are guidelines only: IHC-P (10 µg/mL), WB (0.5 - 1 µg/mL)
Restrictions:	For Research Use only

Handling

Format:	Liquid
Concentration:	1 mg/mL
Buffer:	PBS, Sodium azide 0.02 %
Preservative:	Sodium azide
Precaution of Use:	This product contains Sodium azide: a POISONOUS AND HAZARDOUS SUBSTANCE which should be handled by trained staff only.
Storage:	4 °C/-20 °C
Storage Comment:	Short term 4°C, long term aliquot and store at -20°C, avoid freeze thaw cycles. Store undiluted.

Images

IHC : FREM1 (C-Terminus) antibody (pab70993)



Anti-FREM1 antibody IHC staining of human tonsil.
Immunohistochemistry of formalin-fixed, paraffin-embedded tissue after heat-induced antigen retrieval. Antibody pab70993 concentration 10 µg/ml.

Image 1.