



Datasheet for ABIN1734886

anti-G Protein-Coupled Receptor 1 antibody (2nd Cytoplasmic Domain)



[Go to Product page](#)

1 Image

Overview

| | |
|----------------------|---|
| Quantity: | 50 µg |
| Target: | G Protein-Coupled Receptor 1 (GPR1) |
| Binding Specificity: | 2nd Cytoplasmic Domain |
| Reactivity: | Human |
| Host: | Rabbit |
| Clonality: | Polyclonal |
| Conjugate: | This G Protein-Coupled Receptor 1 antibody is un-conjugated |
| Application: | Immunohistochemistry (Paraffin-embedded Sections) (IHC (p)) |

Product Details

| | |
|-----------------------------|--|
| Immunogen: | Synthetic 15 amino acid peptide from 2nd cytoplasmic domain of human GPR1. Percent identity with other species by BLAST analysis: Human (100%), Gorilla (100%), Gibbon (100%), Monkey (100%), Hamster (93%), Dog (93%), Rabbit (93%), Marmoset (87%) |
| Isotype: | IgG |
| Specificity: | Reacts with human GPR1 |
| Cross-Reactivity (Details): | BLAST analysis of the peptide immunogen showed no homology with other human proteins, except LONRF2 (47 %). |
| Purification: | Antigen affinity purified |

Target Details

| | |
|---------|-------------------------------------|
| Target: | G Protein-Coupled Receptor 1 (GPR1) |
|---------|-------------------------------------|

Target Details

| | |
|-------------------|---|
| Alternative Name: | GPR1 (GPR1 Products) |
| UniProt: | P46091 |
| Pathways: | Steroid Hormone Mediated Signaling Pathway , Regulation of Carbohydrate Metabolic Process |

Application Details

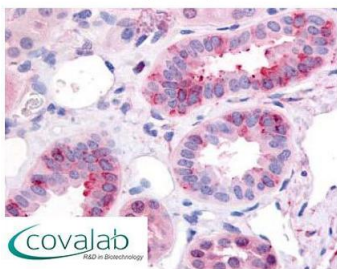
| | |
|--------------------|---|
| Application Notes: | Working dilution: IHC-P (15 - 20 µg/mL) |
| Restrictions: | For Research Use only |

Handling

| | |
|--------------------|--|
| Format: | Liquid |
| Concentration: | 1 mg/mL |
| Buffer: | PBS, Sodium azide 0.1 % |
| Preservative: | Sodium azide |
| Precaution of Use: | This product contains Sodium azide: a POISONOUS AND HAZARDOUS SUBSTANCE which should be handled by trained staff only. |
| Storage: | 4 °C/-80 °C |
| Storage Comment: | Long term: -70°C, Short term: +4°C |

Images

IHC : GPR1 (Cytoplasmic Domain) antibody (pab71105)



Anti-GPR1 antibody pab71105 IHC staining of human kidney. Immunohistochemistry of formalin-fixed, paraffin-embedded tissue after heat-induced antigen retrieval.

Image 1.