

Datasheet for ABIN1734890

anti-G Protein-Coupled Receptor 1 antibody (Extracellular Domain, N-Term)



[Go to Product page](#)

2 Images

Overview

Quantity:	50 µg
Target:	G Protein-Coupled Receptor 1 (GPR1)
Binding Specificity:	Extracellular Domain, N-Term
Reactivity:	Human
Host:	Rabbit
Clonality:	Polyclonal
Conjugate:	This G Protein-Coupled Receptor 1 antibody is un-conjugated
Application:	Immunohistochemistry (Paraffin-embedded Sections) (IHC (p))

Product Details

Immunogen:	Synthetic 19 amino acid peptide from N-terminal extracellular domain of human GPR1. Percent identity with other species by BLAST analysis: Human (100%), Gorilla (100%), Gibbon (100%), Monkey (95%), Marmoset (95%), Hamster (84%), Dog (84%).
Isotype:	IgG
Specificity:	Reacts with human GPR1
Cross-Reactivity (Details):	BLAST analysis of the peptide immunogen showed no homology with other human proteins.
Purification:	Antigen affinity purified

Target Details

Target:	G Protein-Coupled Receptor 1 (GPR1)
---------	-------------------------------------

Target Details

Alternative Name:	GPR1 (GPR1 Products)
UniProt:	P46091
Pathways:	Steroid Hormone Mediated Signaling Pathway , Regulation of Carbohydrate Metabolic Process

Application Details

Application Notes:	Working dilution: IHC-P (32 µg/mL)
Restrictions:	For Research Use only

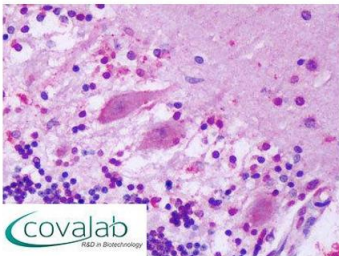
Handling

Format:	Liquid
Concentration:	1 mg/mL
Buffer:	PBS, Sodium azide 0.1 %
Preservative:	Sodium azide
Precaution of Use:	This product contains Sodium azide: a POISONOUS AND HAZARDOUS SUBSTANCE which should be handled by trained staff only.
Storage:	4 °C/-80 °C
Storage Comment:	Long term: -70°C, Short term: +4°C

Images

IHC : GPR1 (N-Terminus) antibody

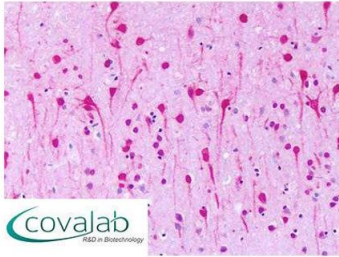
(pab71106)



Anti-GPR1 antibody IHC staining of human brain, cerebellum, purkinje neurons. Immunohistochemistry of formalin-fixed, paraffin-embedded tissue after heat-induced antigen retrieval. Antibody dilution 32 µg/ml.

Image 1.

**IHC : GPR1
(N-Terminus) antibody**
(pab71106)



Anti-GPR1 antibody IHC staining of human brain, neurons.
Immunohistochemistry of formalin-fixed, paraffin-embedded
tissue after heat-induced antigen retrieval.
Antibody dilution 32 ug/ml.

Image 2.