

Datasheet for ABIN1734907
anti-G Protein-Coupled Receptor 116 antibody (3rd Cytoplasmic Domain)



[Go to Product page](#)

1 Image

Overview

Quantity:	50 µg
Target:	G Protein-Coupled Receptor 116 (GPR116)
Binding Specificity:	3rd Cytoplasmic Domain
Reactivity:	Human
Host:	Rabbit
Clonality:	Polyclonal
Conjugate:	This G Protein-Coupled Receptor 116 antibody is un-conjugated
Application:	Immunohistochemistry (Paraffin-embedded Sections) (IHC (p))

Product Details

Immunogen:	Synthetic 16 amino acid peptide from 3rd cytoplasmic domain of human GPR116. Percent identity with other species by BLAST analysis: Human (100%), Gorilla (100%), Gibbon (100%), Monkey (100%), Marmoset (100%), Mouse (94%), Rat (94%), Dog (94%)
Isotype:	IgG
Specificity:	Reacts with human GPR116
Cross-Reactivity (Details):	BLAST analysis of the peptide immunogen showed no homology with other human proteins, except KLHL24 (50 %).
Purification:	Antigen affinity purified

Target Details

Target:	G Protein-Coupled Receptor 116 (GPR116)
---------	---

Target Details

Alternative Name: GPR116 ([GPR116 Products](#))

UniProt: [Q8IZF2](#)

Pathways: [Carbohydrate Homeostasis](#)

Application Details

Application Notes: Working dilution: IHC-P (6 µg/mL)

Restrictions: For Research Use only

Handling

Format: Liquid

Concentration: 1 mg/mL

Buffer: PBS, Sodium azide 0.1 %

Preservative: Sodium azide

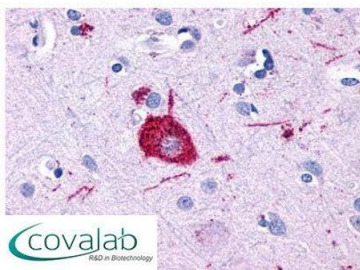
Precaution of Use: This product contains Sodium azide: a POISONOUS AND HAZARDOUS SUBSTANCE which should be handled by trained staff only.

Storage: 4 °C/-80 °C

Storage Comment: Long term: -70°C, Short term: +4°C

Images

IHC : GPR116 (Cytoplasmic Domain) antibody (pab71121)



Anti-GPR116 antibody IHC staining of human brain, neuron.
Immunohistochemistry of formalin-fixed, paraffin-embedded
tissue after heat-induced antigen retrieval.

Image 1.