



Datasheet for ABIN1734928

anti-G Protein-Coupled Receptor 132 antibody (2nd Cytoplasmic Domain)



[Go to Product page](#)

1 Image

Overview

Quantity:	50 µg
Target:	G Protein-Coupled Receptor 132 (GPR132)
Binding Specificity:	2nd Cytoplasmic Domain
Reactivity:	Human
Host:	Rabbit
Clonality:	Polyclonal
Conjugate:	This G Protein-Coupled Receptor 132 antibody is un-conjugated
Application:	Immunohistochemistry (Paraffin-embedded Sections) (IHC (p))

Product Details

Immunogen:	Synthetic 19 amino acid peptide from 2nd cytoplasmic domain of human GPR132 / G2A. Percent identity with other species by BLAST analysis: Human (100%), Gorilla (100%), Gibbon (95%), Monkey (95%), Marmoset (89%).
Isotype:	IgG
Specificity:	Reacts with human GPR132 / G2A
Cross-Reactivity (Details):	BLAST analysis of the peptide immunogen showed no homology with other human proteins.
Purification:	Antigen affinity purified

Target Details

Target:	G Protein-Coupled Receptor 132 (GPR132)
---------	---

Target Details

Alternative Name: GPR132 / G2A ([GPR132 Products](#))

UniProt: [Q9UNW8](#)

Application Details

Application Notes: Working dilution: IHC-P (3 µg/mL)

Restrictions: For Research Use only

Handling

Format: Liquid

Concentration: 1 mg/mL

Buffer: PBS, Sodium azide 0.1 %

Preservative: Sodium azide

Precaution of Use: This product contains Sodium azide: a POISONOUS AND HAZARDOUS SUBSTANCE which should be handled by trained staff only.

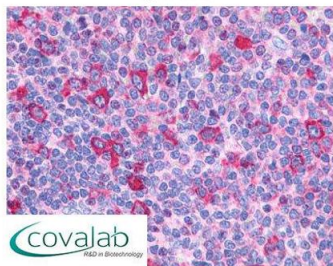
Storage: 4 °C/-80 °C

Storage Comment: Long term: -70°C, Short term: +4°C

Images

IHC : GPR132 / G2A (Cytoplasmic Domain) antibody

(pab71143)



Anti-GPR132 / G2A antibody pab71143 IHC staining of human spleen. Immunohistochemistry of formalin-fixed, paraffin-embedded tissue after heat-induced antigen retrieval.

Image 1.