

Datasheet for ABIN1734929

anti-G Protein-Coupled Receptor 132 antibody (3rd Extracellular Domain)



[Go to Product page](#)

1 Image

Overview

Quantity:	50 µg
Target:	G Protein-Coupled Receptor 132 (GPR132)
Binding Specificity:	3rd Extracellular Domain
Reactivity:	Human
Host:	Rabbit
Clonality:	Polyclonal
Conjugate:	This G Protein-Coupled Receptor 132 antibody is un-conjugated
Application:	Immunohistochemistry (Paraffin-embedded Sections) (IHC (p))

Product Details

Immunogen:	Synthetic 18 amino acid peptide from 3rd extracellular domain of human GPR132 / G2A. Percent identity with other species by BLAST analysis: Human (100%), Gibbon (100%), Gorilla (94%), Monkey (94%), Marmoset (83%).
Isotype:	IgG
Specificity:	Reacts with human GPR132 / G2A
Cross-Reactivity (Details):	BLAST analysis of the peptide immunogen showed no homology with other human proteins, except PRDM4 (61 %).
Purification:	Antigen affinity purified

Target Details

Target:	G Protein-Coupled Receptor 132 (GPR132)
---------	---

Target Details

Alternative Name: GPR132 / G2A ([GPR132 Products](#))

UniProt: [Q9UNW8](#)

Application Details

Application Notes: Working dilution: IHC-P (3 µg/mL - 28)

Restrictions: For Research Use only

Handling

Format: Liquid

Concentration: 1 mg/mL

Buffer: PBS, Sodium azide 0.1 %

Preservative: Sodium azide

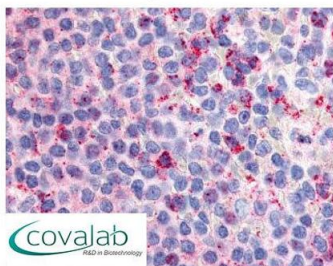
Precaution of Use: This product contains Sodium azide: a POISONOUS AND HAZARDOUS SUBSTANCE which should be handled by trained staff only.

Storage: 4 °C/-80 °C

Storage Comment: Long term: -70°C, Short term: +4°C

Images

IHC : GPR132 / G2A (Extracellular Domain) antibody (pab71144)



Anti-GPR132 / G2A antibody pab71144 IHC staining of human spleen. Immunohistochemistry of formalin-fixed, paraffin-embedded tissue after heat-induced antigen retrieval.

Image 1.