



Datasheet for ABIN1734931

## anti-G Protein-Coupled Receptor 132 antibody (C-Term, Cytoplasmic Domain)



[Go to Product page](#)

### 2 Images

#### Overview

Quantity:	50 µg
Target:	G Protein-Coupled Receptor 132 (GPR132)
Binding Specificity:	C-Term, Cytoplasmic Domain
Reactivity:	Human
Host:	Rabbit
Clonality:	Polyclonal
Conjugate:	This G Protein-Coupled Receptor 132 antibody is un-conjugated
Application:	Immunohistochemistry (Paraffin-embedded Sections) (IHC (p))

#### Product Details

Immunogen:	Synthetic 18 amino acid peptide from C-terminal cytoplasmic domain of human GPR132 / G2A. Percent identity with other species by BLAST analysis: Human (100%), Gorilla (94%), Gibbon (94%), Monkey (94%), Hamster (89%), Panda (89%), Marmoset (83%)
Isotype:	IgG
Specificity:	Reacts with human GPR132 / G2A
Cross-Reactivity (Details):	BLAST analysis of the peptide immunogen showed no homology with other human proteins, except DNAH8 (50 %).
Purification:	Antigen affinity purified

#### Target Details

Target:	G Protein-Coupled Receptor 132 (GPR132)
---------	---

## Target Details

Alternative Name: GPR132 / G2A ([GPR132 Products](#))

UniProt: [Q9UNW8](#)

## Application Details

Application Notes: Working dilution: IHC-P (10 µg/mL)

Restrictions: For Research Use only

## Handling

Format: Liquid

Concentration: 1 mg/mL

Buffer: PBS, Sodium azide 0.1 %

Preservative: Sodium azide

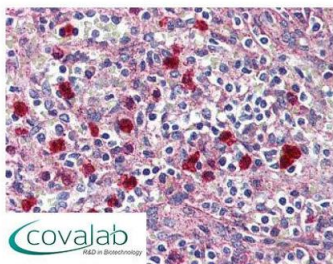
Precaution of Use: This product contains Sodium azide: a POISONOUS AND HAZARDOUS SUBSTANCE which should be handled by trained staff only.

Storage: 4 °C/-80 °C

Storage Comment: Long term: -70°C, Short term: +4°C

## Images

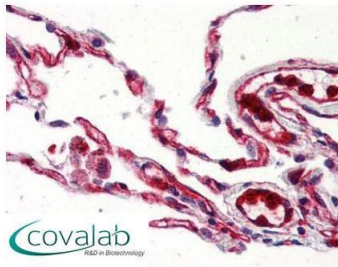
### IHC : GPR132 / G2A (C-Terminus) antibody (pab71141)



Anti-GPR132 / G2A antibody pab71141 IHC staining of human spleen, red pulp. Immunohistochemistry of formalin-fixed, paraffin-embedded tissue after heat-induced antigen retrieval.

Image 1.

**IHC : GPR132 / G2A  
(C-Terminus) antibody**  
(pab71141)



Anti-GPR132 / G2A antibody pab71141 IHC staining of human lung. Immunohistochemistry of formalin-fixed, paraffin-embedded tissue after heat-induced antigen retrieval.

Image 2.