



[Go to Product page](#)

Datasheet for ABIN1734943

## anti-GPR139 antibody (1st Cytoplasmic Domain)

### 1 Image

#### Overview

Quantity:	50 µg
Target:	GPR139
Binding Specificity:	1st Cytoplasmic Domain
Reactivity:	Human
Host:	Rabbit
Clonality:	Polyclonal
Conjugate:	This GPR139 antibody is un-conjugated
Application:	Immunohistochemistry (Paraffin-embedded Sections) (IHC (p))

#### Product Details

Immunogen:	Synthetic 17 amino acid peptide from 1st cytoplasmic domain of human GPR139. Percent identity with other species by BLAST analysis: Human (100%), Gorilla (100%), Gibbon (100%), Monkey (100%), Marmoset (100%), Mouse (100%), Rat (100%), Hamster (100%)
Isotype:	IgG
Specificity:	Reacts with human GPR139
Cross-Reactivity (Details):	BLAST analysis of the peptide immunogen showed no homology with other human proteins, except GPR142 (65 %).
Purification:	Antigen affinity purified

#### Target Details

Target:	GPR139
---------	--------

## Target Details

Alternative Name: GPR139 ([GPR139 Products](#))

UniProt: [Q6DWJ6](#)

## Application Details

Application Notes: Working dilution: IHC-P (6 µg/mL)

Restrictions: For Research Use only

## Handling

Format: Liquid

Concentration: 1 mg/mL

Buffer: PBS, Sodium azide 0.1 %

Preservative: Sodium azide

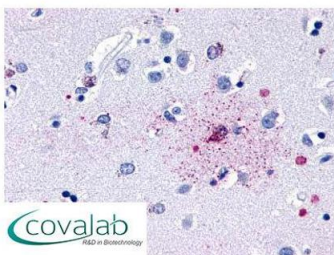
Precaution of Use: This product contains Sodium azide: a POISONOUS AND HAZARDOUS SUBSTANCE which should be handled by trained staff only.

Storage: 4 °C/-80 °C

Storage Comment: Long term: -70°C, Short term: +4°C

## Images

### IHC : GPR139 (Cytoplasmic Domain) antibody (pab71156)



Anti-GPR139 antibody pab71156 IHC staining of human brain, neurons and glia. Immunohistochemistry of formalin-fixed, paraffin-embedded tissue after heat-induced antigen retrieval.

Image 1.