

Datasheet for ABIN1734951

anti-GPR148 antibody (3rd Cytoplasmic Domain)[Go to Product page](#)**1** Image

Overview

Quantity:	50 µg
Target:	GPR148
Binding Specificity:	3rd Cytoplasmic Domain
Reactivity:	Human
Host:	Rabbit
Clonality:	Polyclonal
Conjugate:	This GPR148 antibody is un-conjugated
Application:	Immunohistochemistry (Paraffin-embedded Sections) (IHC (p))

Product Details

Immunogen:	Synthetic 20 amino acid peptide from 3rd cytoplasmic domain of human GPR148. Percent identity with other species by BLAST analysis: Human (100%), Gorilla (100%), Gibbon (100%), Monkey (100%).
Isotype:	IgG
Specificity:	Reacts with human GPR148
Cross-Reactivity (Details):	BLAST analysis of the peptide immunogen showed no homology with other human proteins.
Purification:	Antigen affinity purified

Target Details

Target:	GPR148
---------	--------

Target Details

Alternative Name: GPR148 ([GPR148 Products](#))

UniProt: [Q8TDV2](#)

Application Details

Application Notes: Working dilution: IHC-P (12 µg/mL - 18

Restrictions: For Research Use only

Handling

Format: Liquid

Concentration: 1 mg/mL

Buffer: PBS, Sodium azide 0.1 %

Preservative: Sodium azide

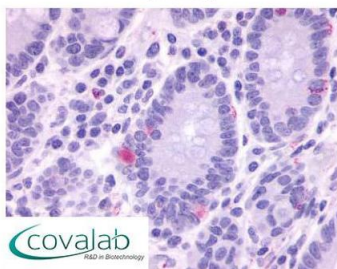
Precaution of Use: This product contains Sodium azide: a POISONOUS AND HAZARDOUS SUBSTANCE which should be handled by trained staff only.

Storage: 4 °C/-80 °C

Storage Comment: Long term: -70°C, Short term: +4°C

Images

IHC : GPR148 (Cytoplasmic Domain) antibody (pab71164)



Anti-GPR148 antibody pab71164 IHC staining of human small intestine, crypts. Immunohistochemistry of formalin-fixed, paraffin-embedded tissue after heat-induced antigen retrieval.

Image 1.