



[Go to Product page](#)

Datasheet for ABIN1734958

## anti-GPR15 antibody (2nd Extracellular Domain)

### 2 Images

#### Overview

Quantity:	50 µg
Target:	GPR15
Binding Specificity:	2nd Extracellular Domain
Reactivity:	Human
Host:	Rabbit
Clonality:	Polyclonal
Conjugate:	This GPR15 antibody is un-conjugated
Application:	Immunohistochemistry (Paraffin-embedded Sections) (IHC (p))

#### Product Details

Immunogen:	Synthetic 19 amino acid peptide from 2nd extracellular domain of human GPR15. Percent identity with other species by BLAST analysis: Human (100%), Chimpanzee (100%), Gorilla (100%), Gibbon (100%), Monkey (100%), Panda (100%), Marmoset (95%)
Isotype:	IgG
Specificity:	Reacts with human GPR15
Cross-Reactivity (Details):	BLAST analysis of the peptide immunogen showed no homology with other human proteins.
Purification:	Antigen affinity purified

#### Target Details

Target:	GPR15
---------	-------

## Target Details

Alternative Name: GPR15 ([GPR15 Products](#))

UniProt: [P49685](#)

## Application Details

Application Notes: Working dilution: IHC-P (10 µg/mL)

Restrictions: For Research Use only

## Handling

Format: Liquid

Concentration: 1 mg/mL

Buffer: PBS, Sodium azide 0.1 %

Preservative: Sodium azide

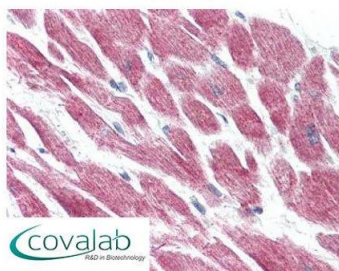
Precaution of Use: This product contains Sodium azide: a POISONOUS AND HAZARDOUS SUBSTANCE which should be handled by trained staff only.

Storage: 4 °C/-80 °C

Storage Comment: Long term: -70°C, Short term: +4°C

## Images

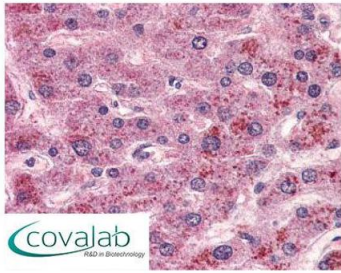
### IHC : GPR15 (Extracellular Domain) antibody (pab71172)



Anti-GPR15 antibody pab71172 IHC staining of human heart. Immunohistochemistry of formalin-fixed, paraffin-embedded tissue after heat-induced antigen retrieval.

Image 1.

**IHC : GPR15  
(Extracellular Domain) antibody**  
(pab71172)



Anti-GPR15 antibody pab71172 IHC staining of human liver. Immunohistochemistry of formalin-fixed, paraffin-embedded tissue after heat-induced antigen retrieval.

Image 2.