

Datasheet for ABIN1734984

**anti-GPR162 antibody (1st Extracellular Domain)**[Go to Product page](#)**1** Image

## Overview

Quantity:	50 µg
Target:	GPR162
Binding Specificity:	1st Extracellular Domain
Reactivity:	Human
Host:	Rabbit
Clonality:	Polyclonal
Conjugate:	This GPR162 antibody is un-conjugated
Application:	Immunohistochemistry (Paraffin-embedded Sections) (IHC (p))

## Product Details

Immunogen:	Synthetic 17 amino acid peptide from 1st extracellular domain of human GPR162. Percent identity with other species by BLAST analysis: Human (100%), Gibbon (100%), Monkey (100%), Dog (100%), Elephant (100%), Panda (100%), Horse (100%), Pig (100%)
Isotype:	IgG
Specificity:	Reacts with human GPR162
Cross-Reactivity (Details):	BLAST analysis of the peptide immunogen showed no homology with other human proteins.
Purification:	Antigen affinity purified

## Target Details

Target:	GPR162
---------	--------

## Target Details

Alternative Name: GPR162 ([GPR162 Products](#))

UniProt: [Q16538](#)

## Application Details

Application Notes: Working dilution: IHC-P (1 µg/mL)

Restrictions: For Research Use only

## Handling

Format: Liquid

Concentration: 1 mg/mL

Buffer: PBS, Sodium azide 0.1 %

Preservative: Sodium azide

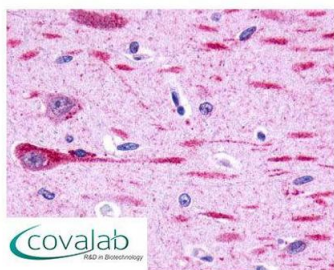
Precaution of Use: This product contains Sodium azide: a POISONOUS AND HAZARDOUS SUBSTANCE which should be handled by trained staff only.

Storage: 4 °C/-80 °C

Storage Comment: Long term: -70°C, Short term: +4°C

## Images

### IHC : GPR162 (Extracellular Domain) antibody (pab71193)



Anti-GPR162 antibody pab71193 IHC staining of human brain, neurons and glia. Immunohistochemistry of formalin-fixed, paraffin-embedded tissue after heat-induced antigen retrieval.

Image 1.