

Datasheet for ABIN1734985

anti-GPR162 antibody (2nd Extracellular Domain)[Go to Product page](#)**1** Image

Overview

Quantity:	50 µg
Target:	GPR162
Binding Specificity:	2nd Extracellular Domain
Reactivity:	Human
Host:	Rabbit
Clonality:	Polyclonal
Conjugate:	This GPR162 antibody is un-conjugated
Application:	Immunohistochemistry (Paraffin-embedded Sections) (IHC (p))

Product Details

Immunogen:	Synthetic 18 amino acid peptide from 2nd extracellular domain of human GPR162. Percent identity with other species by BLAST analysis: Human (100%), Gibbon (100%), Mouse (100%), Monkey (94%), Hamster (94%), Pig (94%), Dog (89%), Horse (89%), Rat (83%)
Isotype:	IgG
Specificity:	Reacts with human GPR162
Cross-Reactivity (Details):	BLAST analysis of the peptide immunogen showed no homology with other human proteins, except MADD (72 %).
Purification:	Antigen affinity purified

Target Details

Target:	GPR162
---------	--------

Target Details

Alternative Name: GPR162 ([GPR162 Products](#))

UniProt: [Q16538](#)

Application Details

Application Notes: Working dilution: IHC-P (7 µg/mL)

Restrictions: For Research Use only

Handling

Format: Liquid

Concentration: 1 mg/mL

Buffer: PBS, Sodium azide 0.1 %

Preservative: Sodium azide

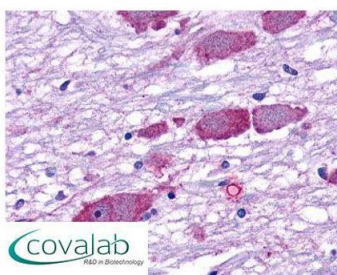
Precaution of Use: This product contains Sodium azide: a POISONOUS AND HAZARDOUS SUBSTANCE which should be handled by trained staff only.

Storage: 4 °C/-80 °C

Storage Comment: Long term: -70°C, Short term: +4°C

Images

IHC : GPR162 (Extracellular Domain) antibody (pab71194)



Anti-GPR162 antibody pab71194 IHC staining of human brain, neurons and glia. Immunohistochemistry of formalin-fixed, paraffin-embedded tissue after heat-induced antigen retrieval.

Image 1.