



Datasheet for ABIN1735010

anti-G Protein-Coupled Receptor 182 antibody (2nd Extracellular Domain)



[Go to Product page](#)

1 Image

Overview

Quantity:	50 µg
Target:	G Protein-Coupled Receptor 182 (GPR182)
Binding Specificity:	2nd Extracellular Domain
Reactivity:	Human
Host:	Rabbit
Clonality:	Polyclonal
Conjugate:	This G Protein-Coupled Receptor 182 antibody is un-conjugated
Application:	ELISA, Immunohistochemistry (Paraffin-embedded Sections) (IHC (p))

Product Details

Immunogen:	Synthetic 18 amino acid peptide from 2nd extracellular domain of human GPR182 / ADMR. Percent identity with other species by BLAST analysis: Human (100%), Gorilla (100%), Gibbon (100%), Monkey (100%), Elephant (94%), Marmoset (89%), Bat (89%)
Isotype:	IgG
Specificity:	Reacts with human GPR182 / ADMR
Cross-Reactivity (Details):	BLAST analysis of the peptide immunogen showed no homology with other human proteins.
Purification:	Antigen affinity purified

Target Details

Target:	G Protein-Coupled Receptor 182 (GPR182)
---------	---

Target Details

Alternative Name: GPR182 / ADMR ([GPR182 Products](#))

UniProt: [O15218](#)

Application Details

Application Notes: Working dilution: ELISA, IHC-P (20 µg/mL)

Restrictions: For Research Use only

Handling

Format: Liquid

Concentration: 1 mg/mL

Buffer: PBS, Sodium azide 0.1 %

Preservative: Sodium azide

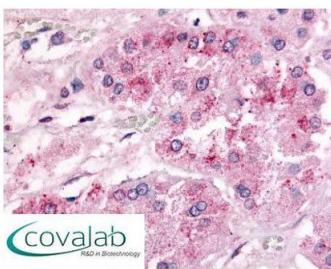
Precaution of Use: This product contains Sodium azide: a POISONOUS AND HAZARDOUS SUBSTANCE which should be handled by trained staff only.

Storage: 4 °C/-80 °C

Storage Comment: Long term: -70°C, Short term: +4°C

Images

IHC : GPR182 / ADMR (Extracellular Domain) antibody (pab71221)



Anti-GPR182 / ADMR antibody pab71221 IHC staining of human adrenal. Immunohistochemistry of formalin-fixed, paraffin-embedded tissue after heat-induced antigen retrieval.

Image 1.