



Datasheet for ABIN1735011

anti-G Protein-Coupled Receptor 182 antibody (3rd Cytoplasmic Domain)



[Go to Product page](#)

1 Image

Overview

Quantity:	50 µg
Target:	G Protein-Coupled Receptor 182 (GPR182)
Binding Specificity:	3rd Cytoplasmic Domain
Reactivity:	Human
Host:	Rabbit
Clonality:	Polyclonal
Conjugate:	This G Protein-Coupled Receptor 182 antibody is un-conjugated
Application:	Immunohistochemistry (Paraffin-embedded Sections) (IHC (p)), Immunocytochemistry (ICC)

Product Details

Immunogen:	Synthetic 20 amino acid peptide from 3rd cytoplasmic domain of human GPR182 / ADMR. Percent identity with other species by BLAST analysis: Human (100%), Gorilla (100%), Gibbon (100%), Monkey (90%), Marmoset (90%), Pig (85%), Hamster (80%), Bovine (80%).
Isotype:	IgG
Specificity:	Reacts with human GPR182 / ADMR
Cross-Reactivity (Details):	BLAST analysis of the peptide immunogen showed no homology with other human proteins.
Purification:	Antigen affinity purified

Target Details

Target:	G Protein-Coupled Receptor 182 (GPR182)
---------	---

Target Details

Alternative Name: GPR182 / ADMR ([GPR182 Products](#))

UniProt: [O15218](#)

Application Details

Application Notes: Working dilution: ICC, IHC-P (5 µg/mL - 9

Restrictions: For Research Use only

Handling

Format: Liquid

Concentration: 1 mg/mL

Buffer: PBS, Sodium azide 0.1 %

Preservative: Sodium azide

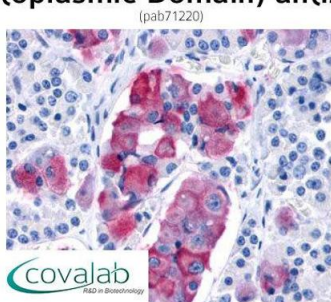
Precaution of Use: This product contains Sodium azide: a POISONOUS AND HAZARDOUS SUBSTANCE which should be handled by trained staff only.

Storage: 4 °C/-80 °C

Storage Comment: Long term: -70°C, Short term: +4°C

Images

IHC : GPR182 / ADMR (Cytoplasmic Domain) antibody



Anti-PRLHR / GPR10 antibody pab71220 IHC staining of human pituitary, anterior. Immunohistochemistry of formalin-fixed, paraffin-embedded tissue after heat-induced antigen retrieval.

Image 1.