

Datasheet for ABIN1735016

anti-G Protein-Coupled Receptor 182 antibody (Extracellular Domain, N-Term)[Go to Product page](#)**1** Image

Overview

Quantity:	50 µg
Target:	G Protein-Coupled Receptor 182 (GPR182)
Binding Specificity:	Extracellular Domain, N-Term
Reactivity:	Human
Host:	Rabbit
Clonality:	Polyclonal
Conjugate:	This G Protein-Coupled Receptor 182 antibody is un-conjugated
Application:	Immunohistochemistry (Paraffin-embedded Sections) (IHC (p)), Immunocytochemistry (ICC)

Product Details

Immunogen:	Synthetic 16 amino acid peptide from N-terminal extracellular domain of human GPR182 / ADMR. Percent identity with other species by BLAST analysis: Human (100%), Gorilla (100%), Marmoset (100%), Gibbon (94%), Monkey (88%).
Isotype:	IgG
Specificity:	Reacts with human GPR182 / ADMR
Cross-Reactivity (Details):	BLAST analysis of the peptide immunogen showed no homology with other human proteins.
Purification:	Antigen affinity purified

Target Details

Target:	G Protein-Coupled Receptor 182 (GPR182)
---------	---

Target Details

Alternative Name: GPR182 / ADMR ([GPR182 Products](#))

UniProt: [O15218](#)

Application Details

Application Notes: Working dilution: ICC, IHC-P (17 µg/mL)

Restrictions: For Research Use only

Handling

Format: Liquid

Concentration: 1 mg/mL

Buffer: PBS, Sodium azide 0.1 %

Preservative: Sodium azide

Precaution of Use: This product contains Sodium azide: a POISONOUS AND HAZARDOUS SUBSTANCE which should be handled by trained staff only.

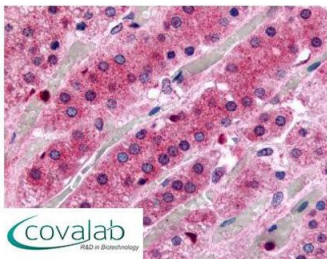
Storage: 4 °C/-80 °C

Storage Comment: Long term: -70°C, Short term: +4°C

Images

IHC : GPR182 / ADMR (N-Terminus) antibody

(pab71223)



Anti-GPR182 / ADMR antibody pab71223 IHC staining of human adrenal, zona fasciculata. Immunohistochemistry of formalin-fixed, paraffin-embedded tissue after heat-induced antigen retrieval.

Image 1.