



[Go to Product page](#)

Datasheet for ABIN1735056

anti-GPR31 antibody (2nd Extracellular Domain)

1 Image

Overview

Quantity:	50 µg
Target:	GPR31
Binding Specificity:	2nd Extracellular Domain
Reactivity:	Human
Host:	Rabbit
Clonality:	Polyclonal
Conjugate:	This GPR31 antibody is un-conjugated
Application:	Immunohistochemistry (Paraffin-embedded Sections) (IHC (p))

Product Details

Immunogen:	Synthetic 19 amino acid peptide from 2nd extracellular domain of human GPR31. Percent identity with other species by BLAST analysis: Human (100%), Gorilla (100%).
Isotype:	IgG
Specificity:	Reacts with human GPR31
Cross-Reactivity (Details):	BLAST analysis of the peptide immunogen showed no homology with other human proteins.
Purification:	Antigen affinity purified

Target Details

Target:	GPR31
Alternative Name:	GPR31 (GPR31 Products)

Target Details

UniProt: [O00270](#)

Application Details

Application Notes: Working dilution: IHC-P (2 µg/mL - 4

Restrictions: For Research Use only

Handling

Format: Liquid

Concentration: 1 mg/mL

Buffer: PBS, Sodium azide 0.1 %

Preservative: Sodium azide

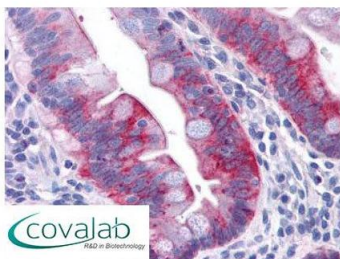
Precaution of Use: This product contains Sodium azide: a POISONOUS AND HAZARDOUS SUBSTANCE which should be handled by trained staff only.

Storage: 4 °C/-80 °C

Storage Comment: Long term: -70°C, Short term: +4°C

Images

IHC : GPR31 (Extracellular Domain) antibody (pab71262)



Anti-GPR31 antibody pab71262 IHC staining of human small intestine, epithelium. Immunohistochemistry of formalin-fixed, paraffin-embedded tissue after heat-induced antigen retrieval.

Image 1.