



[Go to Product page](#)

Datasheet for ABIN1735131

anti-GPR61 antibody (2nd Cytoplasmic Domain)

1 Image

Overview

Quantity:	50 µg
Target:	GPR61
Binding Specificity:	2nd Cytoplasmic Domain
Reactivity:	Human
Host:	Rabbit
Clonality:	Polyclonal
Conjugate:	This GPR61 antibody is un-conjugated
Application:	Immunohistochemistry (Paraffin-embedded Sections) (IHC (p)), ELISA

Product Details

Immunogen:	Synthetic 18 amino acid peptide from 2nd cytoplasmic domain of human GPR61. Percent identity with other species by BLAST analysis: Human (100%), Gorilla (100%), Gibbon (100%), Monkey (100%), Marmoset (100%), Mouse (100%), Rat (100%), Bat (100%)
Isotype:	IgG
Specificity:	Reacts with human GPR61
Cross-Reactivity (Details):	BLAST analysis of the peptide immunogen showed no homology with other human proteins.
Purification:	Antigen affinity purified

Target Details

Target:	GPR61
---------	-------

Target Details

Alternative Name: GPR61 ([GPR61 Products](#))

UniProt: [Q9BZJ8](#)

Application Details

Application Notes: Working dilution: ELISA, IHC-P (20 µg/mL)

Restrictions: For Research Use only

Handling

Format: Liquid

Concentration: 1 mg/mL

Buffer: PBS, Sodium azide 0.1 %

Preservative: Sodium azide

Precaution of Use: This product contains Sodium azide: a POISONOUS AND HAZARDOUS SUBSTANCE which should be handled by trained staff only.

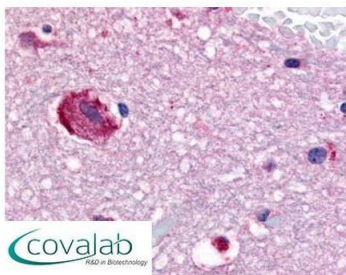
Storage: 4 °C/-80 °C

Storage Comment: Long term: -70°C, Short term: +4°C

Images

IHC : GPR61 (Cytoplasmic Domain) antibody

(pab71325)



Anti-GPR61 antibody pab71325 IHC staining of human brain, caudate. Immunohistochemistry of formalin-fixed, paraffin-embedded tissue after heat-induced antigen retrieval.

Image 1.