

Datasheet for ABIN1735196

anti-SUCNR1 antibody (2nd Cytoplasmic Domain)[Go to Product page](#)**1** Image

Overview

Quantity:	50 µg
Target:	SUCNR1
Binding Specificity:	2nd Cytoplasmic Domain
Reactivity:	Human
Host:	Rabbit
Clonality:	Polyclonal
Conjugate:	This SUCNR1 antibody is un-conjugated
Application:	Immunohistochemistry (Paraffin-embedded Sections) (IHC (p))

Product Details

Immunogen:	Synthetic 15 amino acid peptide from 2nd cytoplasmic domain of human GPR91. Percent identity with other species by BLAST analysis: Human (100%), Gorilla (100%), Gibbon (100%), Monkey (100%), Marmoset (100%), Mouse (93%), Hamster (93%), Panda (93%)
Isotype:	IgG
Specificity:	Reacts with human GPR91
Cross-Reactivity (Details):	BLAST analysis of the peptide immunogen showed no homology with other human proteins.
Purification:	Antigen affinity purified

Target Details

Target:	SUCNR1
---------	--------

Target Details

Alternative Name: GPR91 ([SUCNR1 Products](#))

UniProt: [Q9BXA5](#)

Application Details

Application Notes: Working dilution: IHC-P (3 µg/mL)

Restrictions: For Research Use only

Handling

Format: Liquid

Concentration: 1 mg/mL

Buffer: PBS, Sodium azide 0.1 %

Preservative: Sodium azide

Precaution of Use: This product contains Sodium azide: a POISONOUS AND HAZARDOUS SUBSTANCE which should be handled by trained staff only.

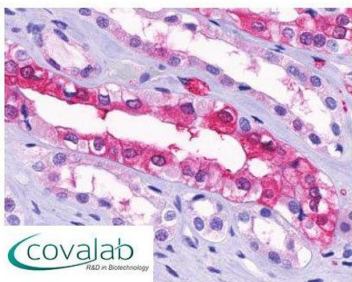
Storage: 4 °C/-80 °C

Storage Comment: Long term: -70°C, Short term: +4°C

Images

IHC : GPR91 (Cytoplasmic Domain) antibody

(pab71389)



Anti-GPR91 antibody pab71389 IHC staining of human kidney, medulla. Immunohistochemistry of formalin-fixed, paraffin-embedded tissue after heat-induced antigen retrieval.

Image 1.