



[Go to Product page](#)

Datasheet for ABIN1735207

anti-GPRC5A antibody (2nd Extracellular Domain)

2 Images

Overview

Quantity:	50 µg
Target:	GPRC5A
Binding Specificity:	2nd Extracellular Domain
Reactivity:	Human
Host:	Rabbit
Clonality:	Polyclonal
Conjugate:	This GPRC5A antibody is un-conjugated
Application:	Immunohistochemistry (Paraffin-embedded Sections) (IHC (p)), Immunocytochemistry (ICC)

Product Details

Immunogen:	Synthetic 16 amino acid peptide from 2nd extracellular domain of human GPRC5A / RAI3. Percent identity with other species by BLAST analysis: Human (100%), Gibbon (100%), Monkey (100%), Marmoset (94%), Mouse (94%), Gorilla (88%), Rat (88%), Dog (88%)
Isotype:	IgG
Specificity:	Reacts with human GPRC5A / RAI3
Cross-Reactivity (Details):	BLAST analysis of the peptide immunogen showed no homology with other human proteins.
Purification:	Antigen affinity purified

Target Details

Target:	GPRC5A
---------	--------

Target Details

Alternative Name: GPRC5A / RAI3 ([GPRC5A Products](#))

UniProt: [Q8NFJ5](#)

Application Details

Application Notes: Working dilution: ICC, IHC-P (18 µg/mL - 36

Restrictions: For Research Use only

Handling

Format: Liquid

Concentration: 1 mg/mL

Buffer: PBS, Sodium azide 0.1 %

Preservative: Sodium azide

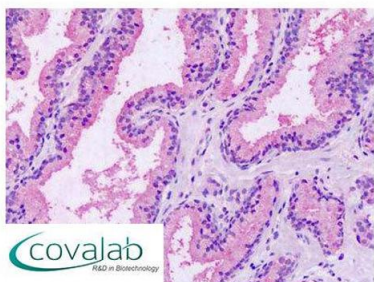
Precaution of Use: This product contains Sodium azide: a POISONOUS AND HAZARDOUS SUBSTANCE which should be handled by trained staff only.

Storage: 4 °C/-80 °C

Storage Comment: Long term: -70°C, Short term: +4°C

Images

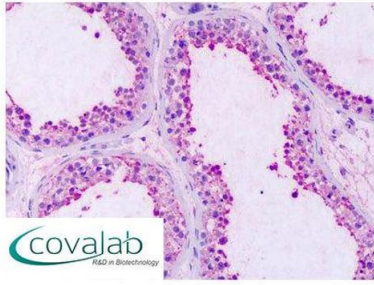
IHC : GPRC5A / RAI3 (Extracellular Domain) antibody (pab71399)



Human, Prostate: Formalin-Fixed,
Paraffin-Embedded (FFPE)

Image 1.

**IHC : GPRC5A / RAI3
(Extracellular Domain) antibody**
(pab71399)



Human, Testis: Formalin-Fixed,
Paraffin-Embedded (FFPE)

Image 2.