

Datasheet for ABIN1735481  
**anti-SUV420H1 antibody**[Go to Product page](#)

## 1 Image

## Overview

Quantity:	100 µL
Target:	SUV420H1
Reactivity:	Human
Host:	Rabbit
Clonality:	Polyclonal
Conjugate:	This SUV420H1 antibody is un-conjugated
Application:	Western Blotting (WB), ELISA, Immunohistochemistry (IHC)

## Product Details

Immunogen:	Synthetic peptide derived from internal domains of the human SUV420H1 protein
Isotype:	IgG
Specificity:	Reacts with the human 99 kDa SUV420H1 protein
Cross-Reactivity:	Mouse (Murine)
Cross-Reactivity (Details):	May cross react with mouse and other species due to sequences homologies.
Purification:	Antiserum

## Target Details

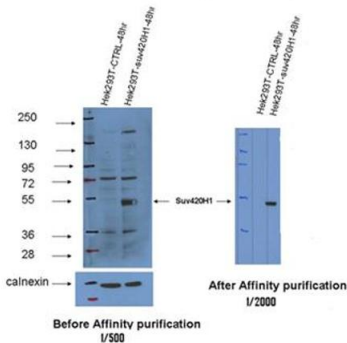
Target:	SUV420H1
Alternative Name:	Histone-lysine N-methyltransferase SUV420H1 ( <a href="#">SUV420H1 Products</a> )

Application Details

Application Notes:	Working dilution: Optimal dilution should be determined by the end user.
Restrictions:	For Research Use only
Handling	
Format:	Lyophilized
Reconstitution:	Must be reconstituted in distilled water.
Storage:	4 °C/-20 °C
Storage Comment:	Lyophilized powder stable for a minimum of 2 years at -20°C. Store reconstituted antibodies at +4°C. For extended periods store in aliquots at -20°C. Antibodies are guaranteed for 6 month from date of receipt.
Expiry Date:	24 months

Images

pab0707: Polyclonal antibody to Histone-lysine N-methyltransferase SUV420H1 (Suvai-1)



Suv420H1 antibody (pab0707) recognized ectopically expressed small isoform of human Suv420H1 protein

Image 1.