

Datasheet for ABIN1735772

anti-IFITM1 antibody (Internal Region)**2** Images[Go to Product page](#)

Overview

Quantity:	50 µg
Target:	IFITM1
Binding Specificity:	Internal Region
Reactivity:	Human, Mouse, Rat
Host:	Rabbit
Clonality:	Polyclonal
Conjugate:	This IFITM1 antibody is un-conjugated
Application:	Western Blotting (WB), ELISA, Immunohistochemistry (Paraffin-embedded Sections) (IHC (p)), Immunocytochemistry (ICC)

Product Details

Immunogen:	IFITM1 antibody was raised against a 16 amino acid peptide near the center of human IFITM1.
Isotype:	IgG
Specificity:	Reacts with human IFITM1
Cross-Reactivity:	Mouse (Murine), Rat (Rattus)
Cross-Reactivity (Details):	Cross reacts with mouse and rat protein.
Purification:	Antigen affinity purified

Target Details

Target:	IFITM1
---------	--------

Target Details

Alternative Name: IFITM1 ([IFITM1 Products](#))

UniProt: [P13164](#)

Application Details

Application Notes: Working dilution: ELISA, ICC, IHC-P (5 µg/mL), WB (1 - 2 µg/mL)

Restrictions: For Research Use only

Handling

Format: Liquid

Concentration: 1 mg/mL

Buffer: PBS, Sodium azide 0.02 %

Preservative: Sodium azide

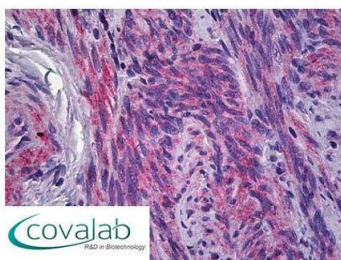
Precaution of Use: This product contains Sodium azide: a POISONOUS AND HAZARDOUS SUBSTANCE which should be handled by trained staff only.

Storage: 4 °C/-20 °C

Storage Comment: Short term 4°C, long term aliquot and store at -20°C, avoid freeze thaw cycles. Store undiluted.

Images

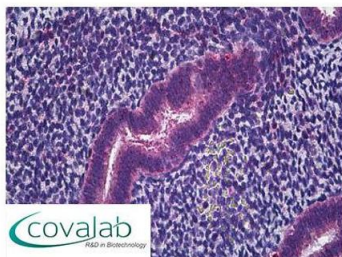
IHC : IFITM1 (Internal) antibody (pab71493)



Anti-IFITM1 antibody IHC staining of human uterus, myometrium. Immunohistochemistry of formalin-fixed, paraffin-embedded tissue after heat-induced antigen retrieval. Antibody pab71493 concentration 5 µg/ml.

Image 1.

IHC : IFITM1
(Internal) antibody
(pab71493)



Anti-IFITM1 antibody IHC staining of human uterus, endometrium. Immunohistochemistry of formalin-fixed, paraffin-embedded tissue after heat-induced antigen retrieval. Antibody pab71493 concentration 5 ug/ml.

Image 2.