

Datasheet for ABIN1736246
anti-KLHL15 antibody (C-Term)[Go to Product page](#)

1 Image

Overview

Quantity:	50 µg
Target:	KLHL15
Binding Specificity:	C-Term
Reactivity:	Human, Mouse, Rat
Host:	Rabbit
Clonality:	Polyclonal
Conjugate:	This KLHL15 antibody is un-conjugated
Application:	Western Blotting (WB), ELISA, Immunocytochemistry (ICC), Immunohistochemistry (Paraffin-embedded Sections) (IHC (p))

Product Details

Immunogen:	KLHL15 antibody was raised against a 15 amino acid peptide near the carboxy terminus of human KLHL15.
Isotype:	IgG
Specificity:	Reacts with human KLHL15
Cross-Reactivity:	Mouse (Murine), Rat (Rattus)
Cross-Reactivity (Details):	Cross reacts with mouse and rat protein.
Purification:	Antigen affinity purified

Target Details

Target:	KLHL15
Alternative Name:	KLHL15 (KLHL15 Products)
UniProt:	Q96M94

Application Details

Application Notes:	Working dilution: ELISA, ICC, IHC-P (5 µg/mL), WB (1 - 2 µg/mL)
Restrictions:	For Research Use only

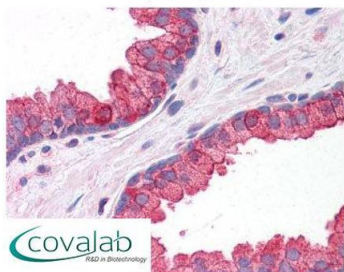
Handling

Format:	Liquid
Concentration:	1 mg/mL
Buffer:	PBS, Sodium azide 0.02 %
Preservative:	Sodium azide
Precaution of Use:	This product contains Sodium azide: a POISONOUS AND HAZARDOUS SUBSTANCE which should be handled by trained staff only.
Storage:	4 °C/-20 °C
Storage Comment:	Short term 4°C, long term aliquot and store at -20°C, avoid freeze thaw cycles. Store undiluted.

Images

IHC : KLHL15 (C-Terminus) antibody

(pab71600)



Anti-KLHL15 antibody IHC staining of human prostate.
Immunohistochemistry of formalin-fixed, paraffin-embedded tissue after heat-induced antigen retrieval. Antibody pab71600 concentration 5 µg/ml.

Image 1.